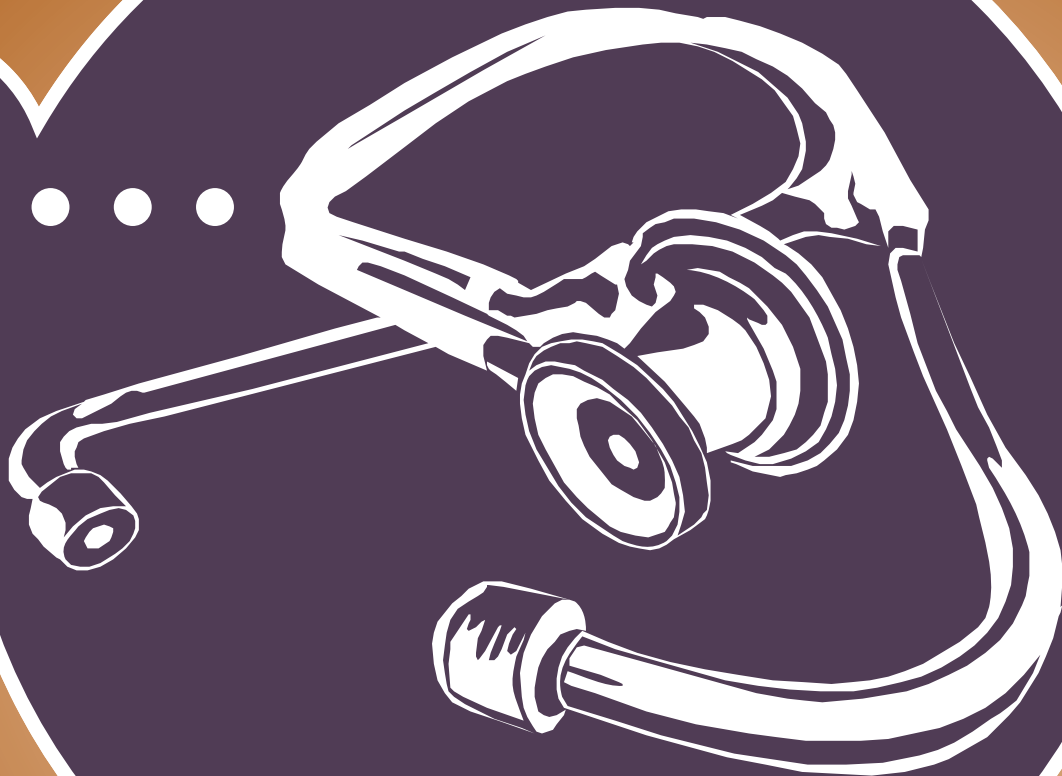


# NURSING EDUCATION

opportunities in mississippi • • • • •



**2006-2007**

published jointly by the  
mississippi area health education center,  
mississippi council of deans and directors of  
schools of nursing, mississippi office of nursing  
workforce, and mha health careers center



## **MISSISSIPPI AREA HEALTH EDUCATION CENTER**

The Mississippi Area Health Education Center (MS AHEC) commends you upon your interest in nursing as a profession. We are pleased that you are seeking information regarding the opportunities for nursing education in Mississippi. The University of Mississippi Medical Center AHEC is a statewide health professions network dedicated to improving access to health care in Mississippi's rural and underserved counties.

Mississippi Area Health Education Center (MS AHEC) is designed to enhance access to quality health care by developing a statewide AHEC program that will retain a diverse and culturally sensitive health workforce that provides the highest quality of care for all by developing partnerships with school districts, health care providers, private foundations and communities that share the AHEC's goals and missions. The primary value of MS AHEC is its focus on the elimination of health care disparities and increasing the availability, accessibility, acceptability and access of quality health care for all medically underserved populations and citizens in identified Health Professional Shortage Areas.

We are delighted to sponsor this edition of Nursing Education Opportunities in Mississippi. The MS AHEC wishes to express gratitude to Mississippi Hospital Association' Health Career Center and the Mississippi Office of Nursing Workforce for their assistance and support of our efforts to address the health professions workforce shortages in our state.

Stephen L. Silberman, DMD, MPH, DrPH  
Executive Director

# **MISSISSIPPI COUNCIL OF DEANS AND DIRECTORS OF SCHOOLS OF NURSING**

Dear Reader:

I commend you upon your interest in nursing as a profession. Nursing will offer you many opportunities to minister to people, and to expand your education. I am pleased that you are seeking information regarding the opportunities for nursing education in Mississippi. We are fortunate in our state to have several options for your consideration.

This information has been prepared to provide you with a comprehensive overview of the many different nursing programs in Mississippi. Basic information is provided related to practical nursing, associate degree (ADN), baccalaureate (BSN), master's (MSN) and doctoral (PhD) programs. You will find information to assist you as you begin your educational preparation as a nurse or to expand your education and achieve an additional level of nursing preparation. A description of each level of nursing preparation is provided, along with identification of the schools that offer that level of educational preparation.

In order to prepare information for you that is relevant to today's nursing practice environment, this document also contains summary work from the Office of Nursing Workforce. We are fortunate in Mississippi to have an office that has as its mission the continuous analysis and monitoring of our workforce needs. The Mississippi Council of Deans and Directors of Schools of Nursing, in collaboration with others, continues to support the work being accomplished by the Office of Nursing Workforce in the commitment to identify and prepare a nursing workforce that will meet the health care needs of Mississippi

The Council wishes to express gratitude to the Mississippi Hospital Association for their assistance in the publication of this information.

Kaye Bender, RN, PhD, FAAN  
Mississippi Council of Deans and Directors of Schools of Nursing  
Chairperson, 2004-2005

# TABLE OF CONTENTS

Nursing Education in Mississippi.....	6
Mississippi Office of Nursing Workforce Redevelopment.....	21
Scholarships.....	29
State Accredited Mississippi Schools of Nursing~2004.....	31
Colleges and Universities	
Baccalaureate and Higher Degree Nursing Programs:	
Alcorn State University *.....	33
Delta State University.....	37
Mississippi College.....	40
Mississippi University for Women *.....	42
University of Mississippi Medical Center.....	49
The University of Southern Mississippi.....	55
William Carey College .....	60
(* Also offers an Associate Degree Nursing Program)	
Community and Junior Colleges	
Associate Degree Nursing Programs:	
Coahoma Community College.....	63
Copiah-Lincoln Community College.....	64
East Central Community College .....	65
Hinds Community College.....	66
Holmes Community College.....	67
Itawamba Community College.....	68
Jones County Junior College.....	69
Meridian Community College.....	70
Mississippi Delta Community College.....	72
Mississippi Gulf Coast Community College.....	73
Northeast Mississippi Community College.....	75
Northwest Mississippi Community College.....	76
Pearl River Community College.....	77
Southwest Mississippi Community College.....	79
Practical Nursing Programs.....	80

The Nursing Opportunities Handbook can also be accessed online at  
[www.mshealthcareers.com](http://www.mshealthcareers.com).

# **NURSING EDUCATION IN MISSISSIPPI**

There are five types of nursing programs in Mississippi. Two types of programs prepare graduates to be eligible to take the National Council Licensure Examination for Registered Nurses (NCLEX-RN). These are the Associate Degree Nursing Programs and the Baccalaureate Degree Nursing Programs. Practical Nursing Programs prepare graduates to be eligible to take the National Council Licensure Examination for Practical Nurses (NCLEX-PN). A fourth program provides nurses with a Master's Degree in Nursing. The fifth and newest nursing education program in Mississippi prepares nurses with a Doctor of Philosophy Degree (Ph.D.) in Nursing.

The associate degree programs are located in 13 community or junior colleges and two public universities. The seven baccalaureate degree programs are located in five public universities and two private colleges. Five of the six master's degree programs and the two Doctor of Philosophy in nursing programs are located in public universities. The 6th master's degree program is located in a private college.

In addition to the academic programs, there is one continuing education program located at the University of Mississippi Medical Center. This program gives continuing education units which represent non-academic credits. Each continuing education unit equals 10 contact hours of instruction.

The title Registered Nurse (RN) means that a person has graduated from an approved School of Nursing, passed the national licensing examination for registered nurses, and paid a fee to practice within the state. The parameters of practice are set by law, and the control of practice is vested with the Mississippi Board of Nursing. A person may not use the title RN or practice as a nurse until the licensing examination is passed.

The state accreditation of degree programs of nursing in Mississippi is vested by state law in the Board of Trustees of State Institutions of Higher Learning. State accreditation of a nursing program is necessary for a graduate of that program to be eligible to take the licensing examination for RNs. State accreditation in nursing education aims to protect the autonomy and individuality of the various educational programs it serves, to provide accountability for the protection of the public against ill-prepared nurses, and to assist in the transfer of students and graduates from one program to another. In order to accomplish this mission, the board of Trustees of State Institutions of Higher Learning has established "Accreditation Standards and Rules and Regulations for Mississippi Nursing Degree Programs", which all nursing programs must meet. The criteria established by the Board of Trustees for admission into nursing programs are found in Table II and III. These are minimal criteria and some schools may have standards which are higher. The standards of each school will be found in its school catalog. Movement from one level of nurs-

ing to a higher level is possible through articulation. Articulation is the process by which a person with one level of licensure or education is facilitated in the advancement of licensure of educational credentials. It is possible within the state of Mississippi for LPNs to obtain their RN license and for RNs to obtain a baccalaureate and master's degree. For specific information regarding articulation policies and procedures, contact individual colleges or universities listed in this brochure.

Practical nursing programs are located in community/junior colleges. All of the community/junior colleges which have associate degree nursing programs also have practical nursing programs. Practical nursing programs are under the supervision of the Mississippi State Board for Community and Junior Colleges. Inquiries concerning these programs should be directed to that office. Admission criteria for practical nursing programs are located in Table IV.

Inquiries concerning practical nursing program should be directed to:

John C. Adcock  
Director for Career and Technical Education  
Mississippi State Board for Community and Junior Colleges  
3825 Ridgewood Road  
Jackson, MS 39211

1. **Associate Degree Nursing Programs (ADN)** prepare nurses at the basic level of entry for professional nursing practice.

**Scope of Practice:** AD nurses are the first level of professional caregivers. The practice of AD nursing is directed toward the promotion and protection of health and the prevention of illness for clients with both physiological and psychosocial needs across the life span. These nurses are prepared to perform a range of complex interventions safely and competently in an integrated health care system. AD nurses participate in the management of nursing care including client teaching and supervision of ancillary nursing personnel.

**Length and Type of Curriculum:** This nursing education pathway is available in 13 community/junior colleges and two senior universities. The program is two years in length, with the graduate receiving an Associate of Arts, Associate of Science, or Associate of Applied Science Degree.

**Places of Employment:** All health care settings.

**Location of Programs:** Alcorn State University, Copiah-Lincoln Community College, East Central Community College, Hinds Community College, Holmes Community College, Itawamba Community College, Jones County Junior College, Meridian

Community College, Mississippi Delta Community College, Mississippi Gulf Coast Community College, Mississippi University for Women, Northeast Mississippi Community College, Northwest Mississippi Community College, Pearl River Community College, and Southwest Mississippi Community College.

2. **Bachelor of Science in Nursing Programs (BSN)**, sometimes called "Baccalaureate Degree Nursing Programs", prepare professional nurses.

**Scope of Practice:** The professional nurse can practice in a variety of health care settings involving individuals, families, and communities. This nurse can assess patient needs in stable and in changing situations, plan and evaluate methods of meeting these needs, and teach and supervise beginning research skills in providing patient care in health care settings.

**Length and Type of Curriculum:** a college or university sponsors this nursing program. It is four years in length, with the graduate receiving a Bachelor of Science in Nursing Degree.

**Places of Employment:** Community health agencies, industrial settings, hospitals, nursing homes, doctors' offices, clinics, and armed services.

**Location of Programs:** Alcorn State University, Delta State University, Mississippi College, Mississippi University for Women, University of Mississippi Medical Center, University of Southern Mississippi, and William Carey College.

3. **Master's Degree Nursing Programs:** Nurse specialists are prepared for leadership roles in health care delivery systems and for collaboration with others interested in health care. They are involved in nursing research, surveys of the health needs of society, and in developing new approaches to prepare nurses to meet these needs. They are prepared to function in teaching, administration, or clinical practice as clinical nurse specialists or nurse practitioners. The specific parameters of practice in an expanded role in Mississippi are defined by law by the Mississippi Board of Nursing.

**Length and Type of Curriculum:** This nursing education program is sponsored by a university, varying in length from one to two years, with the graduate receiving a Master of Science or Master of Science in Nursing Degree. Nurse Practitioners must take and pass a national certification examination and meet the requirements of the Mississippi Board of Nursing in order to practice.

**Places of Employment:** Nursing education programs, hospitals, community health agencies, private practice, and doctors' offices.

**Location of Programs:** Alcorn State University, Delta State University, Mississippi University for Women, University of Mississippi Medical Center, University of Southern Mississippi, and William Carey College

4. **Doctor of Philosophy (Ph.D.) in Nursing Programs** prepares professional nurse specialists at the highest postsecondary degree level.

**Scope of Practice:** Ph.D. nurses are prepared for leadership roles in complex health care delivery systems, educational systems, nursing and interdisciplinary research and unique nursing practice.

**Length and Type of Curriculum:** The length of time required for Ph.D. education in nursing ranges from three to seven years or more and is individually determined.

**Places of Employment:** Colleges and universities, medical centers, integrated health delivery systems, corporations, government agencies private foundations, consultant practices, and entrepreneurial endeavors.

**Location of Programs:** University of Mississippi Medical Center and University of Southern Mississippi.

5. **Practical Nursing Programs (PN)**

**Scope of Practice:** The practical nursing program prepares the individual to assist in providing general nursing care requiring basic knowledge of the biological, physical, behavioral, psychological and sociological sciences, and of nursing procedures which do not require the substantial skills, judgment, and knowledge of a registered nurse. This care is performed under the direction of a registered nurse, licensed physician, or dentist.

**Length and Type of Curriculum:** The practical nursing program is located in 15 community/junior colleges and is a 12-month certificate program. Successful completion of the program allows the graduate to apply for LPN licensure.

**Places of Employment:** Hospitals, nursing homes, doctors' offices, and home health agencies.



**TABLE I**  
**MISSISSIPPI SCHOOLS OF NURSING**

**NURSING EDUCATION PROGRAMS OFFERED**

<b>Location</b>	PN	ADN	BSN	MSN	PhD
-----------------	----	-----	-----	-----	-----

**STATE UNIVERSITIES**

1.	Alcorn State University		X	X	X
2.	Delta State University			X	X
3.	Mississippi University for Women		X	X	X
4.	University of Mississippi Medical Center			X	X
5.	University of Southern Mississippi			X	X

**PRIVATE COLLEGES**

1.	Mississippi College			X	
2.	William Carey College			X	X

**COMMUNITY COLLEGES**

1.	Coahoma Community College	X			
2.	Copiah-Lincoln Community College	X	X		
3.	East Central Community College	X	X		
4.	East Mississippi Community College	X			
5.	Hinds Community College	X	X		
6.	Holmes Community College	X	X		
7.	Itawamba Community College	X	X		
8.	Jones County Junior College	X	X		
9.	Meridian Community College	X	X		
10.	Mississippi Delta Community College	X	X		
11.	Mississippi Gulf Coast Community College	X	X		
12.	Northeast Mississippi Community College	X	X		
13.	Northwest Mississippi Community College	X	X		
14.	Pearl River Community College	X	X		
15.	Southwest Mississippi Community College	X	X		

## **TABLE II**

### **ADMISSION CRITERIA/BACCALAUREATE DEGREE**

### **NURSING PROGRAMS\***

Minimal admission criteria for state-supported Bachelor of Science nursing programs are as follows:

- (a) Students must have an ACT composite score of 18 if taken before October 1989, or 21 if taken in October 1989, or after. Students with the required Act composite score must also have at least a "C" in each prerequisite course and a 2.0 quality point average.
- (b) Students with less than the required ACT composite score must complete all the course prerequisites to the nursing major with at least a "C" and have an overall 2.5 quality point average.
- (c) RN students and students enrolling for a second baccalaureate degree may enter without an ACT by completing all the course prerequisites to the nursing major with at least a "C" and having an overall 2.0 quality point average.

Each school is permitted an allowance of 10 percent of the previous fall's nursing program admission for high risk students who do not meet the above criteria.

Admission criterion for private Bachelor of Science nursing programs is as follows:

- (a) Baccalaureate nursing programs in independent institutions may establish admission criteria which support the goals and aims of individual independent institutions.

Each school may require additional criteria.

\*Board of Trustees of State Institutions of Higher Learning Nursing Program Accreditation Effective 7/1/92;  
Revised July 1999

### **TABLE III ADMISSION CRITERIA/ASSOCIATE DEGREE NURSING PROGRAMS\***

Minimal admission criteria for associate degree nursing programs are as follows:

- (a) Students must have an ACT composite score of 15 if taken before October 1989, or 18 if taken in October 1989, or after
- (b) Students with less than the required ACT composite score must have completed a minimum of 12 semester hours with a 2.0 quality point average before being admitted. They must have made at least a grade of "C" on Anatomy and Physiology Courses, which are included in the above 12 semester hours.

Each school is permitted an allowance of 10 percent of the previous fall's nursing program admissions for high risk students who do not meet the above criteria

Each school may require additional criteria.

\*Board of Trustees of State Institutions of Higher Learning Nursing Program Accreditation Effective 7/1/92;  
Revised July 1999

## **TABLE IV ADMISSION CRITERIA/PRACTICAL NURSING PROGRAMS**

Minimal admission criteria for practical nursing programs are as follows:

- (a) An ACT composite score of 16 with a 12 in math and reading, or 12 composite if taken before October 1989, with a 12 in math and reading; or
- (b) Score at the 12th grade level or above in Math and Reading as measured by a standardized test, selected by the LEA; or
- (c) Have completed the following courses and received a "C" or above: Growth and Development, EPY 2533; Anatomy and Physiology I & II, BIO 2514/2524; and Nutrition, HEC 1253; or
- (d) Provide evidence of equivalent to above, subject to the approval of the registrar of the local community/junior college.

Each school may require additional criteria.

\*Board of Trustees of State Institutions of Higher Learning Nursing Program Accreditation Effective 7/1/92;  
Revised July 1999

## **TABLE V**

### **MISSISSIPPI HOSPITALS**

(The following is a listing of Mississippi Hospital Association member hospitals by the Mississippi City in which they are located).

#### **AMORY**

##### **Gilmore Memorial Hospital**

PO Box 459 Amory, 38821-0459  
(662) 256-7111

#### **BATESVILLE**

##### **Tri-Lakes Medical Center**

303 Medical Center Dr Batesville,  
38606-8608  
(662) 563-5611

#### **BAY SAINT LOUIS**

##### **Hancock Medical Center**

PO Box 2790 Bay Saint Louis, 39521-2790  
(228) 467-8600

#### **BAY SPRINGS**

##### **Jasper General Hospital**

PO Box 527 Bay Springs, 39422  
(601) 764-2101

#### **BELZONI**

##### **Humphreys County Memorial Hospital**

PO Box 510 Belzoni, 39038-0510  
(662) 247-3831

#### **BILOXI**

##### **Biloxi Regional Medical Center**

PO Box 128 Biloxi, 39533-0128  
(228) 432-1571

##### **Department of VA Medical Center**

400 Veterans Ave  
(228) 523-500

##### **Gulf Coast Medical Center**

PO Box 4518 Biloxi, 39535-4518  
(228) 388-6711

#### **BOONEVILLE**

##### **Baptist Memorial Hospital-Booneville**

100 Hospital St Booneville, 38829-3354  
(662) 720-5000

#### **BRANDON**

##### **Rankin Medical Center**

350 Crossgates Blvd Brandon,  
39042-2601  
(601) 825-2811

#### **BROOKHAVEN**

##### **King's Daughters Medical Center**

PO Box 948 Brookhaven, 39602-0948  
(601) 833-6011

#### **CALHOUN CITY**

##### **Calhoun Health Services**

140 Burke Calhoun City Rd  
Calhoun City, 38916-9690  
(662) 628-6611

#### **CANTON**

##### **Madison County Medical Center**

PO Box 1607 Canton, 39046-1607  
(601) 859-1331

#### **CARTHAGE**

##### **Leake Memorial Hospital**

PO Box 557 Carthage, 39051-0557  
(601) 267-1100

#### **CENTREVILLE**

##### **Field Memorial Community Hospital**

PO Box 639 Centreville, 39631-0639  
(601) 645-5221

**CHARLESTON**

**Tallahatchie General Hospital**  
PO Box 230 Charleston, 38921-0240  
(662) 647-5535

**CHOCTAW**

**Choctaw Health Center**  
210 Hospital Circle  
(601) 656-2211

**CLARKSDALE**

**Northwest Mississippi Regional  
Medical Center**  
PO Box 1218 Clarksdale, 38614-1218  
(662) 627-3211

**CLEVELAND**

**Bolivar Medical Center**  
PO Box 1380 Cleveland, 38732-1380  
(662) 846-0061

**COLLINS**

**Covington County Hospital**  
PO Box 1149 Collins, 39428-1149  
(601) 765-6711

**COLUMBIA**

**Marion General Hospital**  
PO Box 630 Columbia,  
39429-0630  
(601) 736-6303

**COLUMBUS**

**Baptist Memorial Hospital-  
Golden Triangle**  
PO Box 1307 Columbus,  
39703-1307  
(662) 244-1000

**CORINTH**

**Magnolia Regional  
Health Center**  
611 Alcorn Dr Corinth,  
38834-9368

**ELLISVILLE**

**Ellisville State School**  
1101 HWY 11 South  
(601) 477-9384

**EUPORA**

**North MS Medical Center-Eupora**  
500 Veterans Memorial Blvd S Eupora,  
39744-2215  
(662) 258-6221

**FAYETTE**

**Jefferson County Hospital**  
PO Box 577 Fayette,  
39069-0577  
(601) 786-3401

**FLOWOOD**

**Brentwood Behavioral  
Healthcare of MS**  
3531 Lakeland Dr Flowood,  
39232-8839  
(601) 936-7804

**FOREST**

**S.E. Lackey Memorial Hospital**  
PO Box 428 Forest, 39074-0428  
(601) 469-4151

**GREENVILLE**

**Delta Regional Medical Center**  
PO Box 5247 Greenville, 38704-5247  
(662) 378-3783

**The King's Daughters Hospital**

PO Box 1857 Greenville, 38702-1857  
(662) 378-2020

**GREENWOOD**

**Greenwood Leflore Hospital**  
PO Box 1410 Greenwood, 38935-1410  
(662) 459-7000

**GRENADA****Grenada Lake Medical Center**

960 Aventura Dr Grenada, 38901-5230  
(662) 227-7000

**GULFPORT****Garden Park Medical Center**

PO Box 1240 Gulfport, 39502-1240  
(228) 575-7000

**HATTIESBURG****Forrest General Hospital**

PO Box 16389 Hattiesburg, 39404-6389  
(601) 288-7000

**Regency Hospital of Hattiesburg**

125 South 25th Avenue  
(601) 288-8511

**Wesley Medical Center**

PO Box 16509 Hattiesburg, 39404-6509  
(601) 268-8000

**HAZLEHURST****Hardy Wilson Memorial Hospital**

PO Box 889 Hazlehurst,  
39083-0889  
(601) 894-4541

**HOLLY SPRINGS****Alliance Healthcare System**

PO Box 6000 Holly Springs,  
38634-6000  
(662) 551-3369

**HOUSTON****Trace Regional Hospital**

PO Box 626 Houston, 38851-0626  
(662) 456-3700

**INDIANOLA****South Sunflower County Hospital**

121 E Baker St Indianola, 38751-2450  
(662) 887-5235

**IUKA****North MS Medical Center-Iuka**

PO Box 860 Iuka, 38852-0860  
(662) 423-6051

**JACKSON****CARES Center, Inc.**

PO Box 1078  
(601) 360-0583

**Central MS Medical Center**

PO Box 59001 Jackson, 39284-9001  
(601) 376-1000

**G.V. Sonny Montgomery**

VA Medical Center  
1500 E. Woodrow Wilson Ave  
(601) 362-4471

**MS Baptist Medical Center, Inc.**

1225 N State St Jackson, 39202-2002  
(601) 968-1000

**MS Hospital for Restorative Care**

PO Box 23695 Jackson, 39225-3695  
(601) 973-1661

**River Oaks Hospital**

PO Box 5100 Jackson,  
39296-5100  
(601) 932-1030

**St. Dominic-Jackson****Memorial Hospital**

969 Lakeland Dr Jackson, 39216-4606  
(601) 200-2000

**The University Hospitals  
& Clinics**

2500 N State St Jackson, 39216-4500  
(601) 984-4100

**Woman's Hospital at River Oaks**

PO Box 4546 Jackson, 39296-4546  
(601) 932-1000

**KILMICHAEL****Kilmichael Hospital, Inc.**

PO Box 188 Kilmichael, 39747-0188  
(662) 262-4311

**KOSCIUSKO****Montfort Jones****Memorial Hospital**

PO Box 887 Kosciusko, 39090-0887  
(662) 289-4311

**LAUREL****South Central Regional Medical Center**

PO Box 607 Laurel, 39441-0607  
(601) 426-4000

**LEXINGTON****The University Hospitals & Clinics-  
Holmes County**

239 Bowling Green Rd  
(662) 834-1321

**LONG BEACH****South Mississippi Regional Center**

1170 W Railroad St  
(228) 868-2923

**LOUISVILLE****Winston Medical Center**

PO Box 967 Louisville, 39339-0967  
(662) 773-6211

**Diamond Grove Center for****Children & Adolescents**

PO Box 848 Louisville, 39339-0848  
(662) 779-0119

**LUCEDALE****George County Hospital**

PO Box 607 Lucedale, 39452-0607  
(601) 947-3161

**MACON****Noxubee General Hospital**

PO Box 480 Macon, 39341-0480  
(662) 726-4231

**MAGEE****Boswell Regional Center**

P.O. Box 128  
(601) 867-5000

**Magee General Hospital**

300 3rd Ave SE Magee, 39111-3665  
(601) 849-5070

**MAGNOLIA****Beacham Memorial Hospital**

PO Box 351 Magnolia, 39652-0351  
(601) 783-2351

**MARKS****Quitman County Hospital &  
Nursing Home**

340 Getwell St Marks, 38646-9785  
(662) 326-8031

**MCCOMB****Southwest Mississippi Regional  
Medical Center**

PO Box 1307 McComb, 39649-1307  
(601) 249-5500

**MEADVILLE****Franklin County Memorial Hospital**

PO Box 636 Meadville, 39653-0636  
(601) 384-5801

**MENDENHALL****Simpson General Hospital**

PO Box 457 Mendenhall, 39114-0457  
(601) 847-2221

**MERIDIAN****Alliance Health Center**

5000 Highway 39 N  
(601) 483-6211

**East Mississippi State Hospital**

P.O. Box 4128  
(601) 482-6186



**MERIDIAN (CONT'D)****Jeff Anderson Regional Medical Center**

2124 14th St Meridian, 39301-4040  
(601) 553-6000

**Riley Hospital**

PO Box 1810 Meridian, 39302-1810  
(601) 693-2511

**Rush Foundation Hospital**

1314 19th Ave Meridian,  
39301-4116  
(601) 483-0011

**The Specialty Hospital of Meridian**

1314 19th Ave Meridian,  
39301-4116  
(601) 703-9577

**MONTICELLO****Lawrence Co Hospital,  
Div of SW MS Reg Med Ctr**

PO Box 788 Monticello,  
39654-0788  
(601) 587-4051

**MORTON****Scott Regional Hospital**

PO Box 259 Morton, 39117-0259  
(601) 732-6301

**NATCHEZ****Natchez Community Hospital**

PO Box 1203 Natchez, 39121-1203  
(601) 445-6205

**Natchez Regional Medical Center**

PO Box 1488 Natchez, 39121-1488  
(601) 443-2100

**NEW ALBANY****Baptist Memorial Hospital-  
Union County**

200 State Highway 30 W New Albany,  
38652-3112  
(662) 538-7631

**NEWTON****Central MS Residential Center**

P.O. Box 470  
(601) 683-4200

**OCEAN SPRINGS****Ocean Springs Hospital**

3109 Bienville Blvd Ocean Springs,  
39564-4361  
(228) 818-1111

**OLIVE BRANCH****Parkwood Behavioral Health System**

PO Box 766 Olive Branch, 38654-0766  
(662) 895-4900

**OXFORD****Baptist Memorial Hospital-  
North Mississippi**

PO Box 946 Oxford, 38655-6002  
(662) 232-8100

**North Mississippi Regional Center**

967 Regional Center Drive  
(662) 234-1476

**PASCAGOULA****Singing River Hospital**

2809 Denny Ave Pascagoula, 39581-5301  
(228) 809-5000

**PHILADELPHIA****Neshoba County General Hospital-  
Nursing Home**

PO Box 648 Philadelphia, 39350-0648  
(601) 663-1200

**PICAYUNE****Crosby Memorial Hospital**

PO Box 909 Picayune, 39466-0909  
(601) 798-4711

**PONTOTOC****North MS Medical Center-Pontotoc**

PO Box 790 Pontotoc, 38863-0790  
(662) 489-5510

**POPLARVILLE**

**Pearl River County Hospital  
& Nursing Home**  
PO Box 392 Poplarville, 39470-0392  
(601) 795-4543

**PORT GIBSON**

**Claiborne County Hospital**  
PO Box 1004 Port Gibson, 39150-1004  
(601) 437-5141

**PRENTISS**

**Prentiss Regional Hospital  
& Extended Care Facility, Inc.**  
PO Box 1288 Prentiss, 39474-1288  
(601) 792-4276

**PURVIS**

**South Mississippi State Hospital**  
823 Highway 589  
(601) 794-0100

**QUITMAN**

**H.C. Watkins Memorial Hospital**  
605 S Archusa Ave Quitman, 39355-2331  
(601) 776-6925

**RICHTON**

**Perry County General Hospital**  
PO Box 1665 Richton, 39476-1665  
(601) 788-6316

**RIPLEY**

**Tippah County Hospital**  
PO Box 499 Ripley, 38663-0499  
(662) 837-9221

**ROLLING FORK**

**Sharkey-Issaquena Community Hospital**  
PO Box 339 Rolling Fork, 39159-0339  
(662) 873-4396

**RULEVILLE**

**North Sunflower County Hospital**  
PO Box 369 Ruleville, 38771-0369  
(662) 756-2711

**SOUTHAVEN**

**Baptist Memorial Hospital-DeSoto**  
7601 Southcrest Pkwy Southaven,  
38671-4739  
(662) 349-4000

**STARKVILLE**

**Oktibbeha County Hospital**  
PO Box 1506 Starkville, 39760-1506  
(662) 323-4320

**TUPELO**

**North MS Medical Center-Tupelo**  
830 S Gloster St Tupelo, 38801-4934  
(662) 377-3000

**North Mississippi State Hospital**

1937 Briar Ridge Rd  
(662) 690-4200

**TYLERTOWN**

**Walthall County General Hospital**  
100 Hospital Dr Tylertown, 39667-2022  
(601) 876-2122

**UNION**

**Laird Hospital**  
25117 Hwy 15  
(601) 774-8214

**VICKSBURG**

**Promise Specialty Hospital  
of Vicksburg, Inc**  
111 N. Frontage Rd., 2nd Floor  
(601) 619-3526

**River Region Medical Center**

PO Box 590 Vicksburg, 39181-0590  
(601) 883-5001

**WATER VALLEY**

**Yalobusha General Hospital**  
PO Box 728 Water Valley,  
38965-0728  
(662) 473-1411

**WAYNESBORO****Wayne General Hospital**

PO Box 1249 Waynesboro, 39367-1249

(601) 735-5151

**WEST POINT****North MS Medical Center-West Point**

835 Medical Center Dr West Point,

39773-9320

(662) 495-2300

**WHITFIELD****Hudspeth Regional Center**

P.O. Box 127B

(601) 664-6000

**Mississippi State Hospital**

P.O. Box 157

(601) 351-8000

**WIGGINS****Stone County Hospital**

PO Drawer 97 Wiggins, 39577-0097

(601) 528-5838

**WINONA****Tyler Holmes Memorial Hospital**

409 Tyler Holmes Dr Winona, 38967-1521

(662) 283-4114

**YAZOO CITY****King's Daughters Hospital**

823 Grand Ave Yazoo City, 39194-3233

(662) 746-2261

## **2002 MISSISSIPPI COMPETENCY MODEL**

### **INTRODUCTION**

The Mississippi Competency Model is the culmination of a collaborative effort of many nursing leaders in the state of Mississippi as a part of Phase I of the Office of Nursing Workforce Redevelopment (ONWR) project. In 1996, the Mississippi Legislature enacted legislation that created the Office of Nursing Workforce Redevelopment (ONWR). The legislation was spearheaded by the Nursing Organization Liaison Committee (NOLC) whose membership is made up of representatives from all major nursing organizations in Mississippi and functions under the auspices of the Mississippi Nurses' Association (MNA). The ONWR was renamed Office of Nursing Workforce (ONW) in 2001.

The Mississippi Board of Nursing, Mississippi Hospital Association Health, Research and Educational Foundation, Robert Wood Johnson Foundation and the Mississippi Legislature have played integral parts in the administration and funding of the workforce initiative. Primary monies have been provided to NOLC through a Robert Wood Johnson Foundation Colleagues in Caring grant along with funding from the Mississippi Legislature. These monies began a six-year funding period for the expressed purpose of addressing nursing workplace issues in Mississippi.

The Mississippi Competency Model was developed for the purpose of enhancing the education and practice of Mississippi nurses and was implemented in 1997. The desired outcome of this collaboration and development of the model was to facilitate articulation for Mississippi nurses within programs offering higher degrees in nursing and to assist employers in understanding the differences in expected skill sets based on educational degrees.

To achieve these objectives, ONW worked with the Mississippi Council of Deans and Directors and representatives from Mississippi Association of Practical Nurse Educators to develop core competencies for each educational level offered in the state. Drafts of the Model were critiqued by NOLC members, representatives of Mississippi Association of Nursing Executives and faculty members in schools of nursing in the state prior to its publication. The process used to develop the Model is described in the 1997 publication entitled "Mississippi Competency Model" (Eichelberger) and in "Competency Model 101: The Process of Developing Core Competencies" (Eichelberger & Hewlett, 1999).

In March 1999, the ONW received an additional three-year round of funding from the Robert Wood Johnson Foundation as one of 20 participants in Stage II of the Colleagues in Caring grant initiative. The second phase of ONW project funding included the goals of defining the broad concept of "competency", testing and evaluating the Competency Model in academia and service and revising the Model to include PhD competencies.

The Mississippi Competency Model has been a unifying force for nursing education in the state. The process of developing the Model has led to an increased understanding and valuing of the differences and uniqueness in the roles and competencies of nurses with varying educational backgrounds. The Model has been found to be congruent with the outcomes of all types of nursing degrees offered in Mississippi. Therefore, schools of nursing can use the Model as the basis for designing curricula and policies designed to improve the articulation of educational programs and upward mobility of nurses in Mississippi and move toward that end.

**Appendix A**  
**1997 Mississippi Competency Model**  
**COMPETENCIES**

**PROVIDER:** The nurse, utilizing a systematic process, assists clients\* in meeting health care needs in a wide variety of settings. The nurse coordinates the care of clients using a multidisciplinary approach.

	<b>LPN</b>	<b>ADN</b>	<b>BSN</b>	<b>MSN</b>
<b>Care Giver</b>	Provides client care, using an established plan to meet basic health needs, under the direction of qualified health professionals.	Plans, coordinates, implements and evaluates nursing care designed to promote and/or maintain healthy outcomes for clients.	Coordinates, implements and evaluates nursing care designed to promote and/or maintain healthy outcomes for clients. Evaluates theoretical and research-based interventions for their applicability to nursing practice.	Provides and evaluates comprehensive, integrated care utilizing specialized knowledge and expertise to promote and/or maintain healthy outcomes for clients.
<b>Teacher</b>	Provides basic health teaching for clients, with identified health needs, using an established teaching plan.	Designs, implements and evaluates teaching plans of care for clients.	Designs, coordinates, implements and evaluates comprehensive teaching plan(s) for clients.	Designs, implements and evaluates comprehensive teaching programs for clients and health personnel.
<b>Communicator/ Counselor (User of Information Technology)</b>	Establishes and participates in a therapeutic relationship with clients. Uses information necessary to provide basic care for clients.	Establishes and maintains therapeutic relationships with clients. Uses technology for the improvement of client care.	Establishes and manages therapeutic relationships with clients. Integrates multiple technological resources into the delivery of client care.	Develops and evaluates therapeutic relationships with clients. Develops, implements and evaluates counseling strategies. Creates manages and evaluates the usefulness of databases. Evaluates information systems for the improvement of client care.
<b>Advocate</b>	Recognizes issues related to protection of consumers' rights and notifies RN/MD on behalf of client to protect those rights.	Uses knowledge of consumers' rights and responsibilities to plan care for and intervene on behalf of clients. Is aware of health policy and its impact on clients' care.	Disseminates information to increase the knowledge level of clients about health policy and consumer rights and responsibilities. Acts to uphold these rights.	Assumes a leadership role in intervening on behalf of clients to uphold and protect consumers' rights. Engages in health policy development.

\*Clients - The recipients of nursing care. Clients for licensed practical and associate degree nurses include individuals, families, and groups. Clients for baccalaureate and masters prepared nurses include individuals, families, groups and the community. For the purpose of this definition, the community as a client is viewed as a group of individuals living in a geographically related area, sharing common resources and whom others identify as having a relationship

**COMPETENCIES**  
**MEMBER OF A PROFESSION:** The nurse is accountable for the ethical, legal and professional dimensions of the practice of nursing.

	<b>LPN</b>	<b>ADN</b>	<b>BSN</b>	<b>MSN</b>
<b>Scholar (researcher)</b>	Assumes responsibility for professional development and commitment to life long learning. Recognizes the role research plays in the delivery of client care.	Pursues professional development as it relates to the improvement of healthcare. Uses interpreted nursing research findings to improve client outcomes.	Pursues and communicates knowledge as it relates to the improvement of health care. Incorporates research findings into practice and consults with nurse researchers regarding identified nursing problems in order to enhance nursing practice.	Pursues, develops and communicates advanced knowledge as it relates to the improvement of health care. Participates in designing and conducting research specific to the improvement of client outcomes.
<b>Collaborator</b>	Participates in collegial relationships for the purpose of improving client outcomes.	Participates in the establishment of collegial relationships for the purpose of improving client outcomes.	Establishes, promotes and evaluates the care environment for the purpose of improving client outcomes.	Establishes and evaluates professional networks for the purpose of improving client outcomes.
<b>Ethicist</b>	Practices within the values framework and legal parameters of the nursing profession.	Practices within the values framework and legal parameters of the nursing profession. Contributes to the decision-making process relative to ethical issues for clients.	Practices within the values framework and legal parameters of the nursing profession. Participates in the decision-making process relative to ethical issues for clients.	Practices within values framework and legal parameters of nursing. Uses established ethical frameworks to monitor and influence health care practices.

**COMPETENCIES**

**MANAGER:** The nurse optimizes resources to achieve desired outcomes for the promotion of health in client populations.

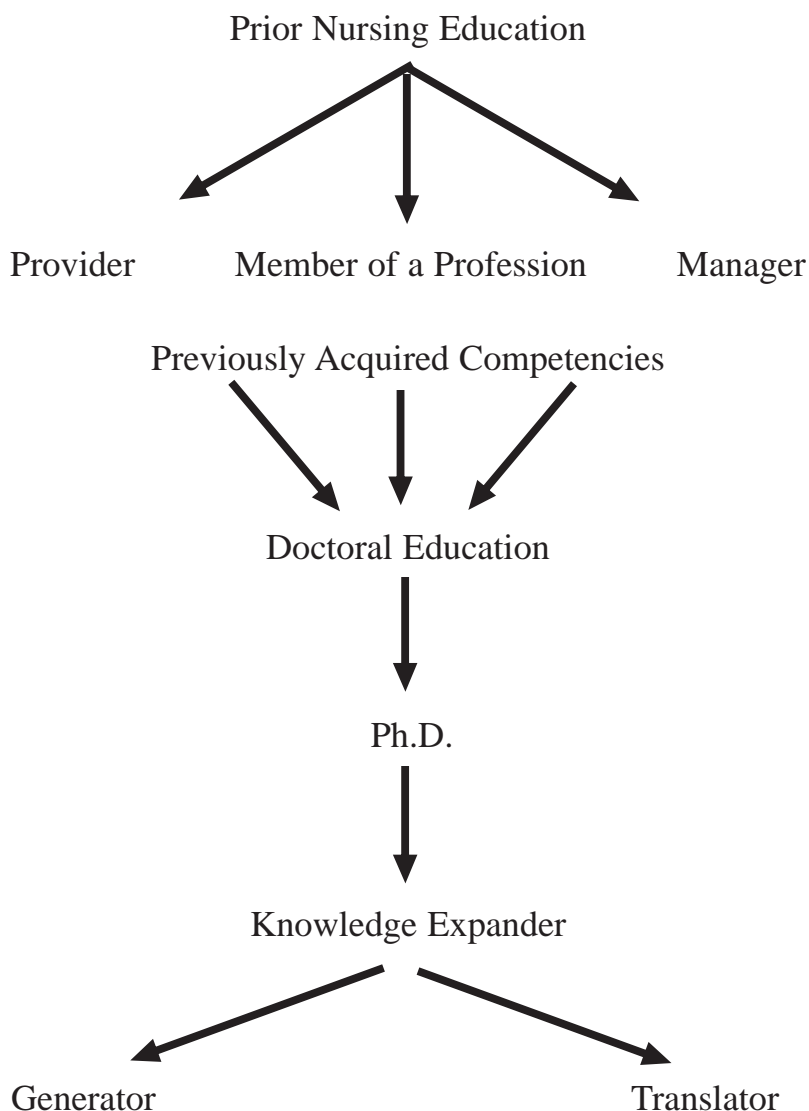
	<b>LPN</b>	<b>ADN</b>	<b>BSN</b>	<b>MSN</b>
<b>Leader (Entrepreneur)</b>	Demonstrates basic management concepts in the provision of client care. Uses knowledge of traditional and alternative care delivery systems in the care of clients. Is receptive to changes in health care.	Works with other health care personnel to coordinate care to improve client outcomes. Participates in implementing traditional and alternative care delivery system. Adapts practice to respond to rapid changes in health care.	Assumes an influential role in planning, managing and monitoring health care to improve client outcomes. Assists in the development and evaluation of traditional and alternative care delivery systems. Plans for implementation of changes in health care.	Provides visionary direction to create, modify, evaluate and enhance the effectiveness of health care systems through monitoring client outcomes. Participates in the establishment and systematic evaluation of client care provided by traditional and alternative care delivery systems. Anticipate, designs and implements needed changes in health care.
<b>Facilitator</b>	Participates in group process to promote the provision of nursing care.	Uses knowledge of group dynamics to improve client outcomes.	Serves as a leader in group process.	Advances group efforts to improve the delivery and quality of health care to multiple constituents utilizing the expertise and skill of nurses and other professional.
<b>Decision Maker</b>	Uses critical thinking and problem solving in making decisions about basic health care needs.	Uses critical thinking and problem solving approaches as a basis for nursing practice.	Uses critical thinking and problem solving to address complex health issues.	Challenges assumptions and explores alternative avenues in the improvement of client outcomes.



The 2002 Mississippi Competency Model includes four roles for the PhD nurse. The placement of the 4th role, Knowledge Expander is consistent with the 1997 Mississippi Competency Model. The 4th role is unique to the PhD nurse but builds upon all prior competencies. Therefore the structure of the revised model includes the first 3 roles of Provider, Member of a Profession and Manger and is followed by the 4th role and the 2 PhD competencies. A schematic representation of how the doctoral role and competencies relate to the roles and competencies previously established in the Model for other educational degrees is presented in Figure 1.

Figure 1.

### **RELATIONSHIP OF ROLES AND COMPETENCIES MISSISSIPPI COMPETENCY MODEL**



## **ROLES WITHIN THE 1997 MODEL**

The competencies listed for the roles of Provider, Member of a Profession and Manager in the 1997 Model are attained as a result of prior educational experiences. These competencies are valid and integral to the outcomes of the graduates of Ph.D. programs in nursing. However, due to the nature of doctoral education and the expectations of a doctorally prepared nurse, the roles of Provider, Member of a Profession and Manager, are not, in and of themselves, sufficient to describe the roles and expected competencies of a Ph.D. graduate. The Ph.D. nurse is expected to be competent in the roles of Provider, Member of a Profession and Manager and comes to the doctoral educational process possessing the competencies of prior educational experiences. This relationship is depicted in Figure 2. In addition to prior formal education, career paths, interests and life experiences add other dimensions to the nurse who is seeking doctoral education and ultimately affect the role of the doctorally prepared nurse.

## **SUMMARY**

The revised Mississippi Competency Model is a graphic representation of the four roles nurses assume when delivering care to others. The role of Provider, Member of a Profession and Manager are common to all nurses regardless of their educational preparation. The 4th role of Knowledge Expander is unique to the Ph.D. nurse and requires the ability to perform the other nursing roles listed in the Model as well.

The competencies set forth in the Model offer broad standards of expectation for graduate nurses holding various educational degrees. While broad in scope, the competencies provide direction for organizing and classifying specific interventions, making possible the grouping of nursing knowledge, skills and abilities according to educational preparation.

## **CONCLUSION**

The Mississippi Competency Model is the result of a collaborative effort of nursing leaders across the state and it was created for the purpose of enhancing the education and practice of Mississippi nurses. The Model has been used in a variety of ways by Mississippi nurses as well as nurses across the United States. The Model has been used as an evaluation tool for new graduates and nursing programs and for curricular development and revision.

The Model is the beginning framework around which nursing interventions can be organized. While the Model, in and of itself, lacks the specificity to classify all nursing skills that comprise the discipline of nursing, what the Model does offer is a framework by which Mississippi nurses can begin to differentiate competency based nursing practice.

But perhaps, the greatest contribution of the Model lies not with the Model as a product but in the Model as process. The current and future use of the 2002 Mississippi Competency Model will forever be dependent on the process by which the document was created, the lessons learned by working together to accomplish the task and the way in which the Model continues to be used to determine competency based practice.

Defining the roles and competencies for all educational levels is a significant accomplishment and the Mississippi Competency Model has shown it is congruent with the outcomes of educational programs throughout the state. The process of nurses working together to define what should be expected of a nurse by virtue of the degree held has been equally valuable. It is the hope of ONW that the legacy of the Mississippi Competency Model will be that of providing the basis for seamless articulation and upward mobility for nurses and beginning the efforts to define the work of the nurse thereby allowing nursing workforce demands to be projected and met.

## **SCHOLARSHIPS**

There are many ways to finance nursing education on the federal, state, and college levels. A brief listing of name and/or scholarships, grants, and loans is given below. Specific scholarship information on funding nursing education may be obtained by contacting the Financial Aid Office at the Institutions of Higher Learning, the Mississippi Hospital Association, and/or the colleges or universities listed in this brochure.

Some web sites that may be helpful are:

FinAid! The Smart Student Guide to Financial Aid - [www.finaid.org](http://www.finaid.org)

fastWEB.com - [www.fastweb.com](http://www.fastweb.com)

Fastaid - [www.fastaid.com](http://www.fastaid.com)

ExPan Scholarship Search -

[www.collegeboard.org/fundfinder/html/ssrctop/html](http://www.collegeboard.org/fundfinder/html/ssrctop/html)

Scholarships for Nursing -

[www.computerinstallaiton.com/scholarshipnew/nursing.html](http://www.computerinstallaiton.com/scholarshipnew/nursing.html)

Peterson.com: The College Channel - [www.petersons.com/ugrad](http://www.petersons.com/ugrad)

### **National/Federal Level**

Pell Grants, Stafford Loans, Supplemental Education Opportunity Grants, Perkins Loans, PLUS loans for parents, Nursing Student Loans, Students from Disadvantaged Background, Loan Repayment in Shortage Areas, SUPEN. In addition to these federal programs, the United States Armed Forces and the Veterans Administration have scholarships providing up to full tuition and expenses for nursing education. Contact the nurse recruiter in the various branches for more specific information. The American Association of Colleges of Nursing sponsors the Nursing Education Assured Access Program which helps students finance a BSN or higher degree in nursing. For more information write: Nursing Education Assured Access Program, P.O. Box 407, Beltsville, MD 20705.

### **State**

The Nursing Education Loan/Scholarship Program from the Institutions of Higher Learning (IHL) includes awards for students pursuing RN to BSN, BSN, MSN, or doctoral degrees. There is also the Nursing Teacher Stipend Program (NTSP) for students planning to teach in institutions of higher learning in Mississippi. Information about loan/scholarship programs from the IHL may be obtained by writing: Mississippi Office of Student Financial Aid, Institutions of Higher Learning, 3825 Ridgewood Road, Jackson, MS 39211-6453, (601) 432-6997 or 1-800-327-2980 (toll free in Mississippi). Nursing Education Scholarships for BSN Education may also be available from

Mississippi Hospitals and Agencies (See Table V for the listing of agencies that may provide nursing scholarships) for the Mississippi Nurses' Association (RNs only). Information about other loan/scholarship programs may be obtained from listed agencies.

### **College/University Level**

Each college or university has various sources of scholarships and loans to fund nursing education including private agencies, endowments, and work-study. For more information, contact the financial aid office or school of nursing of your choice.

## **STATE ACCREDITED MISSISSIPPI SCHOOLS OF NURSING ~ 2004**

1. Alcorn State University, Natchez, Mississippi
2. Copiah-Lincoln Community College, Wesson, Mississippi
3. Delta State University, Cleveland, Mississippi
4. East Central Community College, Decatur, Mississippi
5. Hinds Community College, Raymond, Mississippi
6. Holmes Community College, Grenada, Mississippi
7. Itawamba Community College, Fulton, Mississippi
8. Jones County Junior College, Ellisville, Mississippi
9. Meridian Community College, Meridian, Mississippi
10. Mississippi College, Clinton, Mississippi
11. Mississippi Delta Community College, Moorhead, Mississippi
12. Mississippi Gulf Coast Community College, Gulfport, Mississippi
13. Mississippi University for Women, Columbus, Mississippi
14. Northeast Mississippi Community College, Booneville, Mississippi
15. Northwest Mississippi Community College, Senatobia, Mississippi
16. Pearl River Community College, Poplarville, Mississippi
17. Southwest Mississippi Community College, Summit, Mississippi
18. University of Mississippi Medical Center, Jackson, Mississippi
19. University of Southern Mississippi, Hattiesburg, Mississippi
20. William Carey College, Hattiesburg, Mississippi

All programs are nationally accredited. National accreditation indicates to the public that a program has appropriate educational objectives and is providing the conditions under which these objectives can be fulfilled.

Colleges  
and  
Universities

Baccalaureate  
and  
Higher Degree  
Nursing Programs

---

Associate Degree  
Nursing Programs

# ALCORN STATE UNIVERSITY

**Dr. Mary H. Hill, Dean**

**[mhill@alcorn.edu](mailto:mhill@alcorn.edu)**

**Dr. Linda Godley, Chairperson Department of Graduate Nursing**

**[godley@lorman.alcorn.edu](mailto:godley@lorman.alcorn.edu)**

**Dr. Diane Blanchard, Chairperson, Department of Baccalaureate Nursing**

**[dianehb@lorman.alcorn.edu](mailto:dianehb@lorman.alcorn.edu)**

**Mrs. Teresa Bryan, RN, MSN, Interim Chairperson, Department of  
Associate Degree Nursing**

**[teresa@alcorn.edu](mailto:teresa@alcorn.edu)**

**Alcorn State University**

**School of Nursing**

**15 Campus Drive**

**P.O. Box 18399**

**Natchez, MS 39122**

**Telephone: (601) 304-4300**

**Fax: (601) 304-4372**

**Web Address: [www.alcorn.edu](http://www.alcorn.edu)**

**Types of Programs:**        Baccalaureate Nursing  
                                      RN to BSN Completion  
                                      Associate Degree Nursing  
                                      LPN to RN Fast Track  
                                      Master of Science in Nursing

## **BACCALAUREATE NURSING PROGRAM**

<b>Length of Time:</b>	4 years (9 academic semesters)
<b>Credits Required for Graduation:</b>	129-133 semester credit hours
<b>Degree Awarded:</b>	Bachelor of Science in Nursing (BSN)
<b>Cost:</b>	
Tuition	1,959.60/semester (in state) 4,443.60/semester (out of state)
Room and Board	2,458.00/semester (in state) 2,458.00/semester (out of state)

This information is current as of August 2006 but is subject to change.



## ALCORN STATE UNIVERSITY (CONT'D)

Fees	
Nursing	300.00
Uniforms	250.00
School Pin	54.00
Books	1,500.00+
Malpractice Insurance	30.00+
Equipment	200.00
Travel	Must provide own transportation

## ASSOCIATE DEGREE NURSING PROGRAM

<b>Length of Time:</b>	2 years
<b>Credits Required for Graduation:</b>	70 semester credit hours
<b>Degree Awarded:</b>	Associate of Science in Nursing (ASN)

### Cost:

Tuition	1,959.60/semester (in state) 4,443.60/semester (out of state)
Room and Board	2,458.20/semester (in state) 2,458.00/semester (out of state)
Uniforms	200.00
School Pin	50.00
Books	1000.00
Malpractice Insurance	30.00
Equipment	300.00
Travel	Must provide own transportation

This information is current as of August 2006 but is subject to change.

# ALCORN STATE UNIVERSITY (CONT'D)

## FAST-TRACK OPTION FOR LPNS

<b>Length of Time:</b>	One summer plus one year
<b>Credits Required for Graduation:</b>	72 semester credit hours
<b>Degree Awarded:</b>	Associate of Science in Nursing (ASN)

### Cost:

Tuition	1,959.60/semester (in state) 4,443.60/semester (out of state)
Room and Board	2,458.20/semester (in state) 2,458.00/semester (out of state)
Uniforms	200.00
School Pin	50.00
Books	1000.00
Malpractice Insurance	30.00
Equipment	300.00
Travel	Must provide own transportation

This information is current as of August 2006 but is subject to change.

# ALCORN STATE UNIVERSITY (CONT'D)

## MASTER OF SCIENCE IN NURSING

**Family Nurse Practitioner**

**Nurse Educator**

**Post-Master's Certificate**

**Family Nurse Practitioner**

**Nurse Educator (primarily web-based program of study)**

**Gerontological Nurse Practitioner**

<b>Length of Time:</b>	22 months (4 semesters plus 1--week summer term)
<b>Credits Required for Graduation:</b>	43 semester hours (Family Nurse Practitioner) 36 semester hours (Nurse Educator) 26 semester hours post-master's certificate (Family Nurse Practitioner) 18 semester hours post-master's certificate (Nurse Educator) 12 semester hours posts-master's certificate Nurse Educator, if already NP
<b>Degree Awarded:</b>	Master of Science in Nursing (MSN)
<b>Cost:</b>	
Tuition	201.40/semester hour (in-state) 1,812.60/Full-time (in-state) 477.40/semester hour (out of state) 4,296.60/Full-time (out of state)
Books (entire program)	500.00 - 1,500.00
Thesis binding, microfilming, copying, and copyright fees	100.00 - 300.00
Miscellaneous (lab coat, name pin, fees, lab equipment)	800.00 - 1,000.00
Malpractice Insurance	70.00/year
Travel	Must provide own transportation to clinical sites. Sites close to student's residence are encouraged.

This information is current as of August 2006 but is subject to change.

# DELTA STATE UNIVERSITY

Dr. Lizabeth Carlson, DNS, RN, BC, Dean  
Vicki Bingham, Chair of Academic Programs

School of Nursing  
Delta State University  
Box 3343  
Cleveland, MS 38733-3343  
Telephone: (662) 846-4255; FAX: (662) 846-4267  
E-Mail: [mgruich@deltastate.edu](mailto:mgruich@deltastate.edu)  
Web Page: [www.deltastate.edu](http://www.deltastate.edu)

**Types of Programs:** Baccalaureate Nursing Program  
RN-BSN Completion Program  
Master of Science in Nursing Program  
(Administrator, Educator & Practitioner)  
Post-Master's Certificate for MSN - Family Nurse Practitioner

## BACCALAUREATE NURSING PROGRAM

**Length of Time:** 4 - 1/2 years (9 academic semesters)

**Credits Required for Graduation:** 128 semester credit hours

**Degree Awarded:** Bachelor of Science in Nursing (BSN)

### Cost:

Tuition	1,881.00/semester
Room and Board	2,231.50/semester (varies depending on dorm, room type and meal plan selected)
Liability Insurance	15.00/year
Equipment	300.00 (Approximate)
Books	1300.00 (Approximate total BSN expenditure)
School Pin	\$25-165.00 (Variable)
Miscellaneous Fee	56.50/semester
Travel	Variable. Student must provide own transportation
Uniform	Variable. Student provides own uniform
Lab Fee	280.00/year (approximate)
Test Fee	56.00/semester (subject to change)

\* On-line web-enhanced courses and on-line courses  
Students must have access to computer and Internet

This information is current as of August 2006 but is subject to change.

# DELTA STATE UNIVERSITY (CONT'D)

## RN-BSN COMPLETION PROGRAM

<b>Length of time:</b>	One calendar year
<b>Credits Required for Graduation:</b>	128*
<b>Degree Awarded</b>	Bachelor of Science in Nursing (BSN)
<b>Cost:</b>	
Tuition	1,881.00/semester
Room and Board	2,231.50/semester (varies depending on dorm, room type and meal plan selected)
Equipment	Student provides own equipment
Books	400.00 (Approximate)
School Pin	\$25-165.00 (Varies)
Miscellaneous Fee	\$5.00 credit hour
Travel	Variable. Student must provide own transportation
Uniforms	Variable. Student provides own uniform
Liability Insurance	Required
Lab Fee	30.00
Name tag	10.00

\* Prerequisite credit hours (71hr): RN-BSN required program course credit hours (36hr). Validation credit of 31 hours is awarded to students following successful completion of NUR 358-Transition (4hr) and NUR 311-Comprehensive Health Assessment (3hr). Validation credit is awarded for previously completed A.D.N. course work.

Students must have access to computer and Internet.

This information is current as of August 2006 but is subject to change.

# DELTA STATE UNIVERSITY (CONT'D)

## GRADUATE NURSING PROGRAM

<b>Length of Time:</b>	Two years
<b>Credits Required for Graduation:</b>	44 semester hours
<b>Degree Awarded:</b>	Master of Science in Nursing (MSN) Role Options: Family Nurse Practitioner Adult Health Educator Nurse Administrator
<b>Cost:</b>	
Tuition	1,881.00/semester (full-time student, 9-13 hours)
Room and Board	2,231.50/semester
Books	1,000.00 (Approximate for program)
Thesis Binding	60.00
Travel	Variable. Student must provide own transportation
Uniform	Variable. Student provides own uniform
Liability Insurance	Required
Equipment	Required (Physical Assessment)
Lab Fee	60.00/semester
Name tag	10.00

\*Students must have access to computer and Internet. MSN courses available online.



## MISSISSIPPI COLLEGE (CONT'D)

### BACCALAUREATE PROGRAM FOR RNs

<b>Length of Time:</b>	Begins in summer term. One year to complete nursing courses. Validation of 30 hours of junior level nursing courses. Prerequisites must be completed prior to beginning nursing courses.
<b>Credits Required for Graduation:</b>	131 semester credit hours
<b>Degree Awarded:</b>	Bachelor of Science in Nursing (BSN)
<b>Cost:</b>	
Tuition	355.00/semester hour
Room and Board	2,947.00/semester
Fees	
Fixed Fee	245.00/semester
Graduation	90.00
Uniforms	Use own uniforms
School Pin	250.00 (approx.)
Books	800.00 total (approx.)
Malpractice Insurance	45.00/year
Criminal Background Check	50.00
Equipment	Stethoscope, bandage scissors, watch with second hand
Travel	Varies, must provide own transportation

This information is current as of August 2006 but is subject to change.



# MISSISSIPPI UNIVERSITY FOR WOMEN

**Dr. Sheila Adams, Dean**  
[sadams@muw.edu](mailto:sadams@muw.edu)

**Dr. Linda Cox, Director, BSN Department Chair**  
[lcox@muw.edu](mailto:lcox@muw.edu)

**Ms. Mary Jo Kirkpatrick, ASN Department Chair**  
[mkirmpat@muw.edu](mailto:mkirmpat@muw.edu)

**College of Nursing and Speech-Language Pathology**  
**1100 College Street- MUW 910**  
**Mississippi University for Women**  
**Columbus, MS 39701-5800**  
**Telephone: (662) 329-7299 FAX: (662) 329-8555**  
**Web Address: [www.muw.edu/nursing](http://www.muw.edu/nursing)**

**Types of Programs:** Graduate Nursing Program (MSN: FNP or PNP)  
Post-Master Certificate for MSN-RNs  
Post-Master Certificate for MSN-NPs  
Baccalaureate Nursing Program (Columbus)  
Advanced Placement Option for RNs (Tupelo)  
(Total distance or partial distance option available)  
Associate of Science in Nursing Program  
Advanced Placement Option for LPNs

## BACCALAUREATE NURSING PROGRAM

**Length of Time:** 4 years (8 academic semesters and one 5-week summer term)

**Credits Required for Graduation:** 128 semester credit hours

**Degree Awarded:** Bachelor of Science in Nursing (BSN)

**Cost:**

Tuition	1,845.00/semester
Room and Board	2,130.00/semester
Uniforms	130.00 (first year only)
School Pins (optional)	140.00 (senior year)
Books	1,000.00 (approx.)
Malpractice Insurance	30.00/year
Equipment	Stethoscope, bandage scissors, goggles, penlight, hemostats (Approx. \$50.00 total), and a watch with second hand
Travel	0-60 miles (one way) varies with each semester. Must provide own transportation.

This information is current as of August 2006 but is subject to change.

# MISSISSIPPI UNIVERSITY FOR WOMEN (CONT'D)

## ADVANCED PLACEMENT OPTION FOR RNs (TUPELO CAMPUS)

**Length of Time:** 3 academic semesters (1 calendar year)

**Credits Required for Graduation:** 128 semester credit hours

**Degree Awarded:** Bachelor of Science in Nursing (BSN)

**Cost:**

Tuition	1,845.00/semester 153.75/semester hour
Room and Board	None available
School Pin (optional)	140.00 senior years
Books	500.00
Malpractice Insurance	Verification required.
Travel	Must provide own transportation.
Computer/Printer	1,500.00
Internet Connection	20.00/month

This information is current as of August 2006 but is subject to change.

# MISSISSIPPI UNIVERSITY FOR WOMEN (CONT'D)

## ASSOCIATE DEGREE NURSING PROGRAM

<b>Length of Time:</b>	2 years (4 academic semesters plus 3 pre requisite courses)
<b>Credits Required for Graduation:</b>	72 semester credit hours
<b>Degree Awarded:</b>	Associate of Science (ASN)
<b>Cost:</b>	
Tuition	1,845.00/semester or 153.75/semester hour
Room and Board	2,130.00/semester
Uniforms	150.00 (approx. first year only)
School Pin (optional)	100.00 (approx. sophomore year)
Books	900.00 (approx.)
Malpractice Insurance	25.00/year
Equipment	Stethoscope, bandage scissors, goggles, watch with second hand, CPR mask (\$60)
Travel	0-60 miles (one way) varies with each semester. Must provide own transportation.

This information is current as of August 2006 but is subject to change.

# MISSISSIPPI UNIVERSITY FOR WOMEN (CONT'D)

## ADVANCED PLACEMENT OPTION FOR LPNs

<b>Length of Time:</b>	One summer term and one academic year
<b>Credits Required for Graduation:</b>	72 semester hours
<b>Degree Awarded:</b>	Associate of Science (ASN)
<b>Cost:</b>	
Tuition	1,845.00/semester or 153.75/semester hour
Room and Board	2,130.00/semester
Uniforms	100.00 (approx.) first year only
School Pins (optional)	100.00 (approx.) sophomore years
Books	900.00 (approx.)
Malpractice Insurance	90.00/year or verification required for both roles
Equipment	Stethoscope, bandage scissors, goggles, watch with second hand, CPR mask (\$60.00)
Travel	0-60 miles (one way) varies with each semester. Must provide own transportation

This information is current as of August 2006 but is subject to change.

# MISSISSIPPI UNIVERSITY FOR WOMEN (CONT'D)

## GRADUATE NURSING PROGRAM

<b>Length of Time:</b>	1 year (3 semesters)
<b>Credits Required for Graduation:</b>	39 semester hours
<b>Degree Awarded:</b>	Master of Science in Nursing (MSN) Family Nurse Practitioner (FNP) or Pediatric Nurse Practitioner (PNP)
<b>Cost:</b>	
Tuition	1,845.00/semester (resident) (9-13 hours) 4,457.00/semester (non-resident) (9-13 hours) 205.00/credit hour (resident) (less than 9 hours) 495.20/credit hour (non-resident) (less than 9 hours)
Evidenced Based Study Binding	100.00/4 copies
Uniforms	Must provide own white lab coat
Books	1,800.00 (approx.)
Malpractice Insurance	Verification required.
Equipment for Clinical Practice	550.00
Travel	Must provide own transportation as clinical experiences are arranged in the learner's geographic area.

This information is current as of August 2006 but is subject to change.

# MISSISSIPPI UNIVERSITY FOR WOMEN (CONT'D)

## POST-MASTER'S CERTIFICATE FOR MSNs

<b>Length of Time:</b>	1 year (3 semesters)
<b>Credit Required for Completion:</b>	28 semester hours
<b>Certificate Awarded:</b>	Family Nurse Practitioner Pediatric Nurse Practitioner
<b>Cost:</b>	
Tuition	1,845.00/semester (resident) (9-13 hours) 4,457.00/semester (non-resident) (9-13 hours) 205.00/credit hour (resident) (less than 9 hours) 495.20/credit hour (non-resident) (less than 9 hours)
Uniforms	Must provide own lab coat.
Books	1,800.00 (approx.)
Malpractice Insurance	Verification required.
Equipment for Clinical Practice	550.00
Travel	Must provide own transportation as clinical experiences are arranged in the learner's geographic area.

This information is current as of August 2006 but is subject to change.

# MISSISSIPPI UNIVERSITY FOR WOMEN (CONT'D)

## POST-MASTER'S FAMILY FAST TRACK CERTIFICATE FOR MSN-NPs

<b>Length of Time:</b>	1 year (3 semesters)
<b>Credit Hours for Completion:</b>	16 semester hours
<b>Certificate Awarded:</b>	Family Nurse Practitioner Pediatric Nurse Practitioner
<b>Cost:</b>	
Tuition	205.00/credit hour (resident) 495.20 (non-resident)
Uniforms	Must provide own white lab coat
Books	550.00 (approx.)
Malpractice Insurance	Verification required.
Equipment	550.00 (approx.)
Travel	Must provide own transportation as clinical experiences arranged in the learner's geographic area.

This information is current as of August 2006 but is subject to change.

# UNIVERSITY OF MISSISSIPPI MEDICAL CENTER

**Dr. Kaye Bender, Dean and Professor**

**[kbender@son.umsmed.edu](mailto:kbender@son.umsmed.edu)**

**Dr. Kim Hoover, Associate Dean for Academic Program Development  
and Evaluation**

**[khoover@son.umsmed.edu](mailto:khoover@son.umsmed.edu)**

**Dr. Theresa Doddato, Associate Dean for Administrative Affairs and Practice**

**[tdoddato@son.umsmed.edu](mailto:tdoddato@son.umsmed.edu)**

**Dr. Peggy Hewlett, Associate Dean for Research**

**[phewlett@son.umsmed.edu](mailto:phewlett@son.umsmed.edu)**

**Dr. Sharon Lobert, Assistant Dean for Graduate Programs**

**[slobert@son.umsmed.edu](mailto:slobert@son.umsmed.edu)**

**Dr. Patricia Waltman, Assistant Dean for Undergraduate Programs**

**[pwaltman@son.umsmed.edu](mailto:pwaltman@son.umsmed.edu)**

**Web Address: [www.umsmed.edu](http://www.umsmed.edu)**

**The University of Mississippi**

**School of Nursing**

**2500 North State Street**

**Jackson, MS 39216-4505**

**Telephone: (601) 984-6200; FAX: (601) 815-5957**

**Types of Programs:**

- Baccalaureate Nursing Program
- Early Entry Option
- Advanced Standing: RN-BSN Option
- Dual Option: RN-BSN-MSN
- Master of Science in Nursing Program
- Family Nurse Practitioner
- Adult Acute Care Nurse Practitioner
- Neonatal Nurse Practitioner
- Adult/Family Psychiatric Mental Health Nurse Practitioner
- Nurse Educator
- Nurse Executive
- Nurse Manager
- Doctor of Philosophy (In collaboration with The University of Southern Mississippi)

This information is current as of August 2006 but is subject to change.



# UNIVERSITY OF MISSISSIPPI MEDICAL CENTER (CONT'D)

## BACCALAUREATE NURSING PROGRAM

The purpose of the baccalaureate program is to prepare nurses for entry-level professional practice and provide a solid foundation for graduate study.

**Length of Time:** 2 years (5 semesters) at Medical Center with 2 years of academic work prior to admission to Medical Center

**Credits Required for Graduation:** 63 semester credit hours

**Degree Awarded:** Bachelor of Science in Nursing (BSN)

**Cost:**

Tuition	
Resident	1,759.50/semester
Non-Resident	3,697.50/semester
Malpractice Insurance	29.00/year
Uniforms and Equipment	1,500.00/year
Pin (senior year)	45.00/year
Books	1,500.00/year
Travel	Must provide own transportation.

This information is current as of August 2006 but is subject to change.

# UNIVERSITY OF MISSISSIPPI MEDICAL CENTER (CONT'D)

## RN TO BSN OPTION

The purpose of the baccalaureate program is to prepare registered nurses for entry-level professional practice and provide a solid foundation for graduate study. The Advanced Standing (RN-BSN) Program Option is offered through distance learning at the UMC site in Jackson and the Desoto Center Site at Southaven. Courses are delivered on-line although some class attendance on campus may be required. These infrequent classes will meet through interactive distance learning using compressed video transmission between the two sites.

<b>Length of Time:</b>	One year (3 semesters)
<b>Credits Required for Graduation:</b>	30 semester hours
<b>Degree Awarded:</b>	Bachelor of Science in Nursing (BSN)

### Cost:

Tuition	
Resident	1,759.50/semester
Non-Resident	3,697.50/semester
Malpractice Insurance	29.00/year
Books	1,500.00/year
Travel	Must provide own transportation.

This information is current as of August 2006 but is subject to change.

# UNIVERSITY OF MISSISSIPPI MEDICAL CENTER (CONT'D)

## DUAL OPTION: RN- BSN-MSN

The purpose of the dual option RN-BSN-MSN is to give associate degree nurses who want to earn a master's degree an accelerated approach for acquiring a master's degree in nursing. The Dual Option program graduates will meet both the BSN and MSN program objectives.

**Length of Time:**

All requirements for degree must be complete within a six-year time span.

**Credits Required for Graduation:**

33 Nursing Upper Division Course and Completion of the required course work for the selected master's program

**Degree Awarded:**

Bachelor and Master of Science in Nursing (BSN-MSN)

**Cost:**

Tuition	
Resident	3,203.00/year
Non-Resident	6,704.00/year
Dormitory room (single)	2,898.00/year
Dormitory room (double)	2,082.00/year
Malpractice Insurance	13.00/year
Books	1,500.00/year
Travel	Must provide own transportation.

This information is current as of August 2006 but is subject to change.

# UNIVERSITY OF MISSISSIPPI MEDICAL CENTER (CONT'D)

## MASTER OF SCIENCE IN NURSING PROGRAM

The purpose of the master's program is to: 1) prepare baccalaureate nurses for advanced practice and 2) provide a solid foundation for additional graduate study.

**Length of Time:** All requirements for degree must be complete within a six-year time span.

**Credits Required for Graduation:** Completion of the required coursework for the selected master's program.

**Degree Awarded:** Master of Science in Nursing (MSN)

**Tracks Offered:**

- Family Nurse Practitioner
- Adult Acute Care Nurse Practitioner
- Neonatal Nurse Practitioner
- Adult/Family Psychiatric Mental Health Nurse Practitioner
- Nurse Educator
- Nurse Executive
- Nurse Manager

**Cost:**

Tuition	
Resident	1,601.50/semester
Non-Resident	3,352.00/semester
Dormitory room (single)	1,449.00/semester
Dormitory room (double)	1,041.00/semesterr
Malpractice Insurance	13.00/year
Thesis Binding, Microfilming, When applicable Copyright Fees	
Books	1,500.00/year
Travel	Must provide own transportation.

This information is current as of August 2006 but is subject to change.

## UNIVERSITY OF MISSISSIPPI MEDICAL CENTER (CONT'D)

### DOCTOR OF PHILOSOPHY (IN COLLABORATION WITH THE UNIVERSITY OF SOUTHERN MISSISSIPPI)

The purpose of the doctor of philosophy degree in nursing is to prepare scholars with expertise in selected, substantive areas that will contribute to the science and practice of nursing through systematic inquiry and theory development. Graduates will be prepared to meet state, regional, and national needs for doctoral prepared faculty in schools of nursing and other leadership positions in health-related organizations.

**Length of time:** All requirements for degree must be complete within a seven-year time span.

**Credits Required for Graduation:** Plan of study is individually arranged.

**Degree Awarded:** Doctor of Philosophy (Ph.D.)

**Cost:**

Tuition	
Resident	1,545.50/semester
Non-Resident	3,296.00/semester
Dormitory room (single)	1,449.00/semester
Dormitory room (double)	1,041.00/semester
Malpractice Insurance	13.00/year
Dissertation Binding, Microfilming, When applicable Copyright Fees	
Books	1,500.00/year
Travel	Must provide own transportation.

This information is current as of August 2006 but is subject to change.

# THE UNIVERSITY OF SOUTHERN MISSISSIPPI

**Dr. Kathleen Masters, Interim Associate Director for Undergraduate Programs**

**School of Nursing**

**The University of Southern Mississippi**

**118 College Drive, Box 5095**

**Hattiesburg, MS 39406-5095**

**Telephone: (601) 266-5896; FAX: (601) 266-5927**

**E-Mail: [kathleen.masters@usm.edu](mailto:kathleen.masters@usm.edu)**

**Dr. Anna Brock, Assistant Director for Graduate Programs**

**Email: [anna.brock@usm.edu](mailto:anna.brock@usm.edu)**

**Telephone: (601) 266-5490; FAX: (601) 266-5927**

**Web Address: [www.usm.edu](http://www.usm.edu)**

**Dr. Faye Mitchell, Coordinator of Gulf Park Campus**

**E-Mail: [faye.mitchell@usm.edu](mailto:faye.mitchell@usm.edu)**

**730 East Beach Blvd.**

**Long Beach, MS 39560**

**Telephone: (228) 865-4527**

**FAX: (228) 867-2619**

**Dr. Evadna Lyons, Coordinator of RN-BSN Program at Meridian**

**E-Mail: [evadna.lyons@usm.edu](mailto:evadna.lyons@usm.edu)**

**1000 Highway 19 North**

**Meridian, MS 39307-5799**

**Telephone: (601) 484-0400**

**FAX: (601) 484-0439**

**Dr. Cynthia Luther, Coordinator of FNP Program at Meridian**

**E-Mail: [cynthia.luther@usm.edu](mailto:cynthia.luther@usm.edu)**

**Telephone: (601) 484-0400**

**FAX: (601) 484-0439**

## **Types of Programs:**

Baccalaureate Nursing Program -

Hattiesburg and Long Beach

RN/BSN and RN/MSN -

Hattiesburg, Long Beach, and Meridian

Master's Nursing Program -

Hattiesburg, Long Beach, and Meridian

Doctoral Program - Hattiesburg

On-line courses available

This information is current as of August 2006 but is subject to change.

# THE UNIVERSITY OF SOUTHERN MISSISSIPPI (CONT'D)

## BACCALAUREATE NURSING PROGRAM

<b>Length of Time:</b>	4 academic semesters for baccalaureate program 2 academic semesters and one summer term for RN/BSN program
<b>Credits Required for Graduation:</b>	128 Baccalaureate 128 RN/BSN
<b>Degree Awarded:</b>	Bachelor of Science in Nursing
<b>Cost:</b>	
Tuition	2,297.00/semester
Room and Board	2,200.00/semester (approx.)
Graduation and Licensing	200.00
Uniforms	200.00
Books	800.00 (approx.)
Malpractice Insurance	10.00/clinical course
Equipment	Watch with second hand, stethoscope
Travel	2-50 miles (one-way) from campus to clinical placement. Must provide own transportation.

This information is current as of August 2006 but is subject to change.

# THE UNIVERSITY OF SOUTHERN MISSISSIPPI (CONT'D)

## RN / MSN PROGRAM

<b>Length of Time:</b>	24 to 33 months
<b>Credits Required for Graduation:</b>	158-168
<b>Degree Awarded:</b>	Master of Science in Nursing (Emphases in Adult Health Nursing, Community Health Nursing, Nursing Service Administration, Psychiatric/Mental Health Nurse Practitioner and Family Nurse Practitioner)
<b>Cost:</b>	
Tuition	2,297.00/semester
Room and Board	1,500.00/semester (approx.)
Graduation and Licensing	150.00
Uniforms	200.00
Books	800.00 (approx.)
Malpractice Insurance	10.00/clinical course
Equipment	Watch with second hand, Stethoscope
Travel	2-50 miles (one-way) from campus to clinical placement. Must provide own transportation.

Program is available in Hattiesburg, Long Beach, and Meridian.

This information is current as of August 2006 but is subject to change.



# THE UNIVERSITY OF SOUTHERN MISSISSIPPI (CONT'D)

## MASTER'S NURSING PROGRAM

<b>Length of Time:</b>	15 to 24 months
<b>Credits Required for Graduation:</b>	45 to 55 semester credit hours
<b>Degree Awarded:</b>	Master of Science in Nursing (Emphases in Adult Health Nursing, Community Health Nursing, Nursing Service Administration, Psychiatric Nursing, and Family Nurse Practitioner)

<b>Cost:</b>	
Tuition	2,497.00/semester
Room and Board	1,500.00/semester
Thesis Binding	10.00/copy
Uniforms	Provide own uniform when applicable
Books	300.00/semester
Malpractice Insurance	10.00/clinical semester 40.00/clinical semester for FNP
Equipment	FNP must provide assessment instruments.
Travel	Must provide own transportation to clinical sites.

Program is available in Hattiesburg, Long Beach, and Meridian.

This information is current as of August 2006 but is subject to change.

# THE UNIVERSITY OF SOUTHERN MISSISSIPPI (CONT'D)

## DOCTOR OF PHILOSOPHY (IN COLLABORATION WITH UNIVERSITY OF MISSISSIPPI MEDICAL CENTER SCHOOL OF NURSING)

<b>Length of Time:</b>	Individually determined.
<b>Credits Required for Graduation:</b>	72 semester hours
<b>Degree Awarded:</b>	Doctor of Philosophy (Ph.D.) Emphases in Ethics, Health Care Policy, and Leadership
<b>Cost:</b>	
Tuition	2,497.00/semester
Room and Board	1,500.00/semester
Dissertation Binding	10.00/copy
Books	300.00 - 400.00/semester
Travel	Must provide own transportation to agency sites as needed.

Program is available in Hattiesburg.

This information is current as of August 2006 but is subject to change.

# WILLIAM CAREY COLLEGE

**Dr. Mary W. Stewart, Dean E-Mail: [mary.stewart@wmcarey.edu](mailto:mary.stewart@wmcarey.edu)**

**Dr(c). Kay C. Cater, BSN Program Director E-Mail: [kay.cater@wmcarey.edu](mailto:kay.cater@wmcarey.edu)**

**School of Nursing, Hattiesburg**

**498 Tuscan Avenue**

**Hattiesburg, MS 39401-5499**

**Telephone: (601) 318-6147; FAX (601) 318-6446**

**Dr. Marilyn M. Cooksey, BSN Program Director**

**E-Mail: [marilyn.cooksey@wmcarey.edu](mailto:marilyn.cooksey@wmcarey.edu)**

**School of Nursing, New Orleans**

**Dr. Janet Williams, BSN Program Director E-Mail: [janet.williams@wmcarey.edu](mailto:janet.williams@wmcarey.edu)**

**School of Nursing, Gulfport**

**1856 Beach Drive**

**Gulfport, MS 39507**

**Web Address: [www.wmcarey.edu](http://www.wmcarey.edu)**

**Dr. Kandy K. Smith, MSN Program Director E-Mail: [kandy.smith@wmcarey.edu](mailto:kandy.smith@wmcarey.edu)**

**School of Nursing, Gulfport**

**Types of Programs:**        Baccalaureate Nursing Program (non-RN)  
                                     Baccalaureate Nursing Program (RNs)  
                                     Masters of Science in Nursing (Gulfport Campus Only)

## BACCALAUREATE NURSING PROGRAM

<b>Length of Time:</b>	4 years
<b>Credits Required for Graduation:</b>	131 semester credit hours
<b>Degree Awarded:</b>	Bachelor of Science in Nursing (BSN)
<b>Cost:</b>	
Tuition	250.00/credit hour
Fees	
Lab	30/semester hour of lab
Testing	125
Uniforms	Must provide own
Books	1,500.00
Malpractice Insurance	30.00/year
Equipment	Watch with second hand, stethoscope, bandage scissors,
Travel	Must provide own transportation to clinical facilities.
Graduation Fee	75.00

This information is current as of August 2006 but is subject to change.

## **WILLIAM CAREY COLLEGE (CONT'D)**

### **ADVANCED PLACEMENT FOR RNs**

**Length of Time:** 12 months to complete nursing courses

**Credits Required for Graduation:** 131 semester credit hours

**Degree Awarded:** Bachelor of Science in Nursing (BSN)

**Cost:**

Tuition	250.00/credit hour
Fees	
Lab	30/semester hour of lab
Uniforms	Use own uniforms
Malpractice Insurance	30.00/year
Books	600.00
Graduation Fee	75.00

### **MASTER'S NURSING PROGRAM**

**Length of Time:** 12 months

**Credits Required for Graduation:** 45 to 55 semester credit hours

**Degree Awarded:** Master of Science in Nursing (MSN)  
(Emphases in Adult Health and Nursing  
Education)

Cost	\$230.00/semester hour
Insurance	30.00/year
Books	500.00
Application Fee	25.00
Graduation Fee	75.00
Equipment	40.00/clinical semester for FNP Assessment instruments required for clinical and lab.
Travel	Must provide own transportation.

This information is current as of August 2006 but is subject to change.

Community  
and  
Junior Colleges

A ssociate D egree  
Nursing Programs

---

P ractical N ursing  
Programs

# COAHOMA COMMUNITY COLLEGE

**Mrs. LaWanda Herron, Director**

**Associate Degree Nursing Program  
Coahoma Community College  
3240 Friars Point Road  
Clarksdale, MS 38614  
Telephone: (662) 621-4210  
E-Mail: lherron@coahomacc.edu  
Web Address: www.coahomacc.edu**

<b>Type of Program:</b>	Associate Degree Nursing Program RN Accelerated Program
<b>Length of Time:</b>	2 years (4 academic semesters plus one summer) RN Accelerate Program (2 summer terms plus 2 semesters)
<b>Credits Required for Graduation:</b>	73 semester credit hours (2 year program) 65 semester credit hours (1year program)
<b>Degree Awarded:</b>	Associate of Applied Science (AAS)
<b>Cost:</b>	
Tuition	902.00/semester
Room and Board	1,457.00/semester
Fees:	
Nursing Practice	110.00/semester
Graduation	65.00
Pinning	200.00
Diagnostic testing	90.00/semester (includes NCLEX review)
Books	1200.00
Clinical Bag	200.00
Uniforms	300.00
Professional Workshops	825.00
Whitfield Clinical	400.00
Travel	50 miles (one way) from campus to clinical. Must provide on transportation. Travel varies per semester.

This information is current as of August 2006 but is subject to change.

# COPIAH-LINCOLN COMMUNITY COLLEGE

Mrs. Mary Ann Canterbury, Director

Associate Degree Nursing Program  
Copiah-Lincoln Community College  
P. O. Box 649  
Wesson, MS 39191  
Telephone: (601) 643-8413  
Email: [maryann.canterbury@colin.edu](mailto:maryann.canterbury@colin.edu)  
Web address: [www.colin.edu](http://www.colin.edu)

<b>Type of Program:</b>	Associate Degree Nursing Program
<b>Length of Time:</b>	2 years (4 academic semesters)
<b>Credits Required for Graduation:</b>	73 semester credit hours
<b>Degree Awarded:</b>	Associate in Applied Science Degree
<b>Cost:</b>	
Tuition & Fees	900.00/semester
Room and Board	1150.00/semester
Fees:	
Graduation	40.00/last semester
Uniforms and Accessories	300.00/first semester *
CPR Certification	30.00/annually *
Malpractice Insurance	15.00/annually
Physical Examination	200.00/annually *
Immunizations	300.00 *
Books/Miscellaneous	1000.00/annually *
Clinical Travel	10-90 miles (one way). Must provide own transportation to clinical sites.
Standardized exams	30.00/semester *
Graduation Pin & Pictures	300.00 (optional)
State Board Application	70.00
RN Licensing Exam	200.00
Activity Fee	10.00/semester
Study Packets	50.00/semester
Drug Testing	25.00/annually
Criminal History Check	50.00/first semester

\*approximate cost

This information is current as of August 2006 but is subject to change.

# EAST CENTRAL COMMUNITY COLLEGE

**Mrs. Melanie Gilmore, Dean**

**Division of Associate Degree Nursing  
East Central Community College  
Post Office Box 129  
Decatur, MS 39327  
Telephone: (601) 635-2111  
E-Mail: [mgilmore@eccc.edu](mailto:mgilmore@eccc.edu)**

<b>Type of Program:</b>	Associate Degree Nursing LPN Advanced Placement Option
<b>Length of time:</b>	Associate Degree Nursing - 2 years \ (4 academic semesters) LPN Advanced Placement Option - 3 academic semester
<b>Credits Required for Graduation:</b>	70 semester credit hours
<b>Degree Awarded:</b>	Associate of Applied Science
<b>Cost:</b>	
Tuition	700.00/semester
Room and Board	1,130.00/semester
Fees	
Lab	60.00/semester
Graduation	30.00
Uniforms/Accessories	200.00 (approx.)
School Pin	34.00 - 122.00 (optional)
Books	600.00 (approx.)
Malpractice Insurance	15.00/year
Testing Fee	85.00/semester
Technology Fee	25.00/semester
Registration Fee	36.00/semester
Travel	10-80 miles (one way) to clinical sites. Must provide own transportation.

This information is current as of August 2006 but is subject to change.



# HINDS COMMUNITY COLLEGE

Mrs. Debra Gartman Spring, Assistant Dean for Nursing

Nursing/Allied Health Center

Hinds Community college

1750 Chadwick Drive

Jackson, MS 39204-3490

Telephone: (601) 371-3502; FAX: (601) 371-3529

E-Mail: [dgspring@hindsgcc.edu](mailto:dgspring@hindsgcc.edu)

Web Address: [www.hindsgcc.edu/HealthRelatedProfessions/ADN](http://www.hindsgcc.edu/HealthRelatedProfessions/ADN)

<b>Type of Program:</b>	Associate Degree Nursing
<b>Length of Time:</b>	2 years
<b>Credits Required for Graduation:</b>	72 semester credit hours
<b>Degree Awarded:</b>	Associate in Applied Science (AAS)

## Cost:

Tuition	830.00/semester
Room and Board	1,100.00 - 1,500.00/semester
Lab Fee	30.00/semester
Registration Fee	40.00/semester
Graduation Fee	45.00
Board of Nursing Fee	80.00
NCLEX-RN® Exam	200.00
Uniforms and Equipment	375.00
School Pin	90.00
Books	925.00 (approx.)
Liability Insurance	15.00/semester
Test Materials Fees	40.00
Health Screening	410.00 (cost will vary)
Fingerprint/Background Checks	50.00
Travel	Must provide own transportation

## LPN TO RN OPTION

A part time evening and weekend option is available for qualified Licensed Practical Nurses (LPN). The LPN to RN Option is designed to assist the qualified LPN in making the transition to Registered Nurse in one calendar year. Upon successful completion of the program, the graduate will be eligible to take the National Council Licensure Exam for Registered Nurses. Complete information is available on the nursing web site.

This information is current as of August 2006 but is subject to change.

# HOLMES COMMUNITY COLLEGE

**Ms. Joyce C. Vaughn, Director**  
**Associate Degree Nursing Program**  
**Grenada Campus**

**1060 Avent Drive**

**Grenada, MS 38901**

**Telephone: (662) 227-2303; FAX: (662) 227-2290**

**E-Mail: [jvaughn@holmescc.edu](mailto:jvaughn@holmescc.edu); Web Address: [www.holmescc.edu](http://www.holmescc.edu)**

**Ms. Mary Tan, Assistant Director**  
**Ridgeland Campus**

**412 W. Ridgeland Avenue**

**Ridgeland, MS 39157**

**Telephone: (601) 856-5400; FAX: (601) 605-3411**

**E-Mail: [mtan@holmescc.edu](mailto:mtan@holmescc.edu); Web Address: [www.holmescc.edu](http://www.holmescc.edu)**

<b>Type of Program:</b>	Associate Degree Nursing Program
<b>Length of Time:</b>	2 years (4 academic semesters plus one summer)  Two LPN Advanced Placement options
<b>Credits Required for Graduation:</b>	71 semester credit hours
<b>Degree Awarded:</b>	Associate in Applied Science (AAS)
<b>Cost:</b>	
Entrance Fee	712.00/semester
(Tuition/Matriculation)	
Room and Board	None available
Nursing fee of 102.25 for the fall and 87.25 for the spring	
Graduation	30.00
Uniforms	250.00 (includes shoes, stethoscope, and scissors)
School Pin	70.00
Books	1000.00 (approx.)
Equipment	Watch with second hand
Travel	Must provide own transportation.

This information is current as of August 2006 but is subject to change.

# ITAWAMBA COMMUNITY COLLEGE

**Ms. Melisa Lepard, Director**

**Department of Associate Degree Nursing  
Itawamba Community College  
602 West Hill Street  
Fulton, MS 38843-1099  
Telephone: (662) 862-8328; FAX: (662) 862-8350  
Email: [mrlepard@iccms.edu](mailto:mrlepard@iccms.edu)  
Web Address: [www.iccms.edu](http://www.iccms.edu)**

<b>Types of Programs:</b>	Associate Degree Nursing Program
<b>Length of Time:</b>	2 years (4 academic semesters plus one summer)
<b>Credits Required for Graduation:</b>	71 semester credit hours
<b>Degree Awarded:</b>	Associate of Applied Science
<b>Cost:</b>	
Tuition	700.00/semester
Room and Board	1165.00/semester
Fees	
Graduation	30.00
Nursing	80.00/semester
Uniforms	130.00
School Pin (optional)	80.00 (approx.)
Books	600.00 (approx.)
Malpractice Insurance	15.00/year
Equipment	Stethoscope, watch with second hand
Travel	3 to 20 miles (one way) from campus to clinical. Must provide own transportation.

This information is current as of August 2006 but is subject to change.

# JONES COUNTY JUNIOR COLLEGE

**Dr. Donna Scoggin, Chair**

**Division of Associate Degree Nursing**

**Jones County Junior College**

**Ellisville, MS 39437**

**Telephone: (601) 477-4019; FAX: (601) 477-4099**

**E-Mail: [donna.scoggin@jcjc.edu](mailto:donna.scoggin@jcjc.edu)**

**<http://www.jcjc.edu/depts/adn>**

**Types of Programs:**

Associate Degree Nursing Program

\*Advanced Placement for LPNs

\*\*Fast-Track option for LPNs

**Length of Time:**

2 years (4 academic semesters plus one 5-week summer session)

**Credits Required for Graduation:**

72 semester credit hours

**Degrees Awarded:**

Associate of Arts (AA)

**Cost:**

Tuition	794.00/semester
Room and Board	1,367.00/semester
Fees	
Registration	30.00
Health Fee	10.00
Technology	36.00
Graduation	30.00
Nursing Lab	
First year	40.00/semester
Second year	85.00/semester
Uniforms	160.00
Books	850.00 (approx.)
Malpractice Insurance	included in lab fees
Achievement Tests	included in lab fees
Physical Examination	Variable
Equipment	Watch with second hand,
Nurse Kit	50.00(stethoscope, etc.)
Parking Decal	10.00
Travel	9 to 55 miles (one way) from campus to clinical. Must provide own transportation.

\* An LPN with one year work experience may challenge the freshman level. An initial fee of \$40.00 is paid and upon successful completion of the challenge the college fee per credit hours is paid. The challenge consists of taking the midterm exam and final exam, demonstrating math proficiency and clinical skill proficiency.

\*\* The Length of this second LPN-to-RN option is one year from the point of entering Nursing Transition I. An LPN with at least one year work experience with IV certification who has completed all the core courses with a grade of C or above is eligible for admission.

This information is current as of August 2006 but is subject to change.

# MERIDIAN COMMUNITY COLLEGE

**Mrs. Betty Davis, Program Head, Associate Degree Nursing and  
Assistant Dean, Nursing Programs**

**Meridian Community College**

**910 Hwy 19 North**

**Meridian, MS 39307**

**Telephone: (601) 484-8745; FAX: (601) 484-8743**

**E-Mail: [bdavis@meridiancc.edu](mailto:bdavis@meridiancc.edu)**

**Web Address: [www.meridiancc.edu](http://www.meridiancc.edu)**

**Types of Programs:**

Associate Degree Nursing Program  
Associate Degree Nursing Accelerated  
Program for LPNs and Paramedics  
Practical Nursing

## ASSOCIATE DEGREE NURSING PROGRAM

**Length of Time:**

2 years (4 academic semesters)

**Credits Required for Graduation:**

74 semester credit hours

**Degree Awarded:**

Associate of Applied Science (AAS)

**Cost:**

Tuition	725.00/semester
Room and Board	1060.00 to 1210.00/semester
Apartment and Board	1375.00/semester
Fees	
Security Fee	5.00/semester
Technology Fee	5.00/semester
Graduation	30.00
Nursing tests	320.00
Uniforms	90.00
School Pin	58.00
Books	600.00 (approx.)
Malpractice Insurance	15.00/year
Background checks	50.00
Equipment	Stethoscope, watch with second hand, scissors
Travel	3 to 10 miles (one way) from campus to clinical. Must provide own transportation.

This information is current as of August 2006 but is subject to change.

## MERIDIAN COMMUNITY COLLEGE (CONT'D)

### ASSOCIATE DEGREE NURSING ACCELERATED PROGRAM FOR LPNs AND PARAMEDICS

This is not a separate program. The accelerated summer course provides for advanced placement into the Associate Degree Nursing Program.

<b>Length of Time:</b>	One accelerated semester and one academic year
<b>Credits Required for Graduation:</b>	72 semester credit hours
<b>Degree Awarded:</b>	Associate of Applied Science (AAS)

**Cost:**

Tuition	725.00/semester
Room and Board	1060.00 to 1210.00/semester
Apartment and Board	1375.00/semester
Fees	
Security Fee	5.00/semester
Technology Fee	5.00/semester
Graduation	30.00
Nursing tests	320.00
Uniforms	90.00
School Pin	58.00
Books	600.00 (approx.)
Malpractice Insurance	15.00/year
Background checks	50.00
Equipment	Stethoscope, watch with second hand, scissors
Travel	3 to 10 miles (one way) from campus to clinical. Must provide own transportation.

This information is current as of August 2006 but is subject to change.

# MISSISSIPPI DELTA COMMUNITY COLLEGE

**Ms. Patti Livingston, RN, MSN, Director**

**Department of Associate Degree Nursing  
Mississippi Delta Community College  
Moorhead, MS 39761  
Telephone: (662) 246-6407; FAX: (662) 246-6432  
E-Mail: [plivingston@msdelta.edu](mailto:plivingston@msdelta.edu)  
Web Address: [www.msdelta.edu](http://www.msdelta.edu)**

<b>Type of Program:</b>	Associate Degree Nursing Program
<b>Length of Time:</b>	2 years (4 academic semesters plus one summer session) LPN Accelerated Track available (12 months)
<b>Credit Required for Graduation:</b>	72 semester credit hours
<b>Degree Awarded:</b>	Associate of Applied Science (AAS)
<b>Cost:</b>	
Tuition	775.00/semester
Room and Board	1,705.00/semester
Fees	
Graduation	35.00
Nursing	300.00/semester
Uniforms	200.00
School Pin	110.00
Books	1200.00 (approx.)
Malpractice Insurance	15.00
Travel	35-60 miles (one way) from campus to clinical. Must provide own transportation.

This information is current as of August 2006 but is subject to change.

# **MISSISSIPPI GULF COAST COMMUNITY COLLEGE**

**Web Address: [www.mgccc.edu](http://www.mgccc.edu)**

**Nica Cason, M.S., R.N., Division Chairperson**

**Email: [nica.cason@mgccc.edu](mailto:nica.cason@mgccc.edu)**

**Alice O'Neal, M.S.N., R.N., Department Chairperson, Perkinston Campus**

**Department of Associate Degree Nursing  
Mississippi Gulf Coast Community College**

**Perkinston Campus**

**P.O. Box 548**

**Perkinston MS 39573**

**Telephone: (601) 928-6203**

**Email: [alice.oneal@mgccc.edu](mailto:alice.oneal@mgccc.edu)**

**Jane Brenden, Ph.D., R.N., Department Chairperson, Jackson County Campus**

**Department of Associate Degree Nursing  
Mississippi Gulf Coast Community College**

**Jackson County Campus**

**P. O. Box 100**

**Gautier, MS 39553**

**Telephone: (228) 497-7660;**

**FAX: (228) 497-7676**

**Email: [jane.brenden@mgccc.edu](mailto:jane.brenden@mgccc.edu)**

**Sandra Murphy, M.S.N., R.N., Department Chairperson, Jefferson Davis Campus**

**Department of Associate Degree Nursing  
Mississippi Gulf Coast Community College**

**Jefferson Davis Campus**

**2226 Switzer Road**

**Gulfport MS 39507**

**Telephone: (228) 896-2501**

**FAX: (228) 897-3918**

**Email: [sandra.murphy@mgccc.edu](mailto:sandra.murphy@mgccc.edu)**

This information is current as of August 2006 but is subject to change.



# MISSISSIPPI GULF COAST COMMUNITY COLLEGE (CONT'D)

<b>Types of Programs:</b>	Associate Degree Nursing Program Jackson County, Jefferson Davis, and Perkinston Campuses
	*LPN to RN Mobility Track Jackson County and Jefferson Davis Campuses Perkinston Campus (Available Summer 2005)
<b>Length of Time:</b>	A.D.N 2 years (4 academic semesters plus one summer term) *LPN to RN 1 year (6 weeks summer term plus 2 academic semesters)
<b>Credits Required for Graduation:</b>	72 semester credit hours
<b>Degree Awarded:</b>	Associate of Applied Science (AAS)
<b>Cost:</b>	
Tuition	745.00/semester
Room and Board	1080.00 (w 5 Day Meal Plan) / semester 1185.00 (w 7 Day Meal Plan) / semester (Rm & Bd available at Perkinston Campus only)
Fees	
Registration	20.00/semester
Textbook Rental	15.00/book
Technology	3.00/credit hour/semester (\$36 max)
Graduation	30.00
Uniforms	100.00 (approx.)
School Pin	45.00 - 455.00
Workbook/Supplies	400.00 (approx.)
Malpractice Insurance	11.00/semester
Travel	10 to 30 miles (one way) from campus to clinical. Must provide own transportation.

\*A LPN to RN Mobility Tract option is available for qualified LPN's. Upon successful completion of the summer Transition course, the student is integrated into the third semester of the associate degree nursing program with the generic students in the fall or the spring semesters.

This information is current as of August 2006 but is subject to change.

# NORTHEAST MISSISSIPPI COMMUNITY COLLEGE

Rebecca West, RN-BC, MSN, Academic Head, Division of Health Services

Telephone: (662) 720-7236

Email: [rawest@nemcc.edu](mailto:rawest@nemcc.edu)

Sherri Shadburn, RN, MSN, Assistant Academic Head,

Division of Health Services/Nursing

Telephone: (662) 720-7264

Email: [sashadburn@nemcc.edu](mailto:sashadburn@nemcc.edu)

Division of Nursing, Northeast Mississippi Community College

101 Cunningham Blvd., Booneville, MS 38829

Fax: (662) 720-7215; Web Address: [www.nemcc.edu](http://www.nemcc.edu)

## Types of Programs:

Associate Degree Nursing Program

\*LPN-RN Upgrade Program

## Length of Time:

A.D.N.: 2 years (4 semesters) after admission

\*LPN-RN (After successful challenge for advanced placement - 2 or 3 semesters)

## Credits Required for Graduation:

71 semester credit hours

## Degree Awarded:

Associate of Applied Science (AAS)

## Cost:

Tuition	850.00/semester (in state)
Dormitory	610.00 - 740.00/semester
Uniforms	85.00
School Pin (optional)	40.00 - 130.00
Books and Materials	1,893.00/4 semesters
Malpractice Policy	15.00/year
Equipment	164.00 (2 years)
Travel	50 miles (one way) from campus to clinical. Must provide own transportation.
Challenge Examinations	60.00
Miscellaneous Expenses	100.00
Physical Exam/Injections	172.00
Testing Fees	25.00/semester

This information is current as of August 2006 but is subject to change.

# NORTHWEST MISSISSIPPI COMMUNITY COLLEGE

Ms. Vicki Hale, Director

**Division of Associate Degree Nursing**  
**Northwest Mississippi Community College**  
**P. O. Box 7009**  
**Senatobia, MS 38668**  
**Telephone: (662) 562-3283; FAX: (662) 560-1117**  
**E-Mail: [yphale@northwestms.edu](mailto:yphale@northwestms.edu)**  
**Web Address: [www.northwestms.edu](http://www.northwestms.edu)**

**Type of Program:** Associate Degree Nursing Program

**Length of Time:** 2 years (4 academic semesters)

**Credits Required for Graduation:** 68 semester credit hours

**Degree Awarded:** Associate of Arts in Nursing

**Cost:**

Tuition	600.00/semester (instate)
Room and Board	1005.00/semester
Fees	
Lab	30.00 (approx.)
Graduation	40.00
Nursing (Testing)	56.00/semester
Uniforms	200.00 (approx.)
School Pin	50.00
Books	400.00 (approx.)
Malpractice Insurance	40.00/year
Equipment	Watch with second hand, stethoscope
Travel	5-40 miles (one way) from campus to clinical. Must provide own transportation.
LPN Challenge Examination	100.00

This information is current as of August 2006 but is subject to change.

# PEARL RIVER COMMUNITY COLLEGE

Ms. Peggy Dease, Director of Nursing Education

Associate Degree Nursing  
Pearl River Community College  
Box 5760  
Poplarville, MS 39470  
Telephone: (601) 403-1017  
FAX: (601) 403-1275  
Email: [pdease@prcc.edu](mailto:pdease@prcc.edu)

<b>Type of Programs:</b>	Associate Degree Nursing Program LPN Bridge Course to RN
<b>Length of Time:</b>	ADN = 2 years (4 academic semesters) LPN Bridge Course = 1 summer term plus 2 academic semesters
<b>Credits Required for Graduation:</b>	72 semester credit hours
<b>Degree Awarded:</b>	Associate of Applied Science (AAS)
<b>Cost:</b>	
Tuition	810.00/semester
Registration Fee	25.00/semester
Room and Board	1,182.00/semester (5 days) 1,359.00/semester (7 days)
Honors Dorms	1,249.00/semester (5 days) 1,435.00/semester (7 days)
Fees	
Nursing	100.00/semester
Criminal Background Check	96.00/semester
Computer Diagnostic Testing	100.00/semester (includes NCLEX review)
Graduation	40.00
Uniforms	200.00 (approx.)
Books	600.00 (approx.)
Malpractice Insurance	15.00/year
School Pin	115.00
Nightingale Lamp	22.00
Equipment	Watch with second hand, stethoscope, bandage scissors, safety glasses
Travel	45 miles (one way) from campus to clinical. Must provide own transportation. Travel varies per semester.
Nursing Transfer Testing Fee	105.00

This information is current as of August 2006 but is subject to change.

## **PEARL RIVER COMMUNITY COLLEGE (CONT'D)**

### **LPN BRIDGE-RN:**

The LPN Bridge Course is designed to enhance the knowledge learned in the LPN program and make the transition into the sophomore level of the ADN program. This course focuses on the fundamentals and the theory and practice of medical-surgical nursing and the role of the nurse as provider of care and a member within the discipline.

Rev. 4/29/04

This information is current as of August 2006 but is subject to change.

# SOUTHWEST MISSISSIPPI COMMUNITY COLLEGE

**Ms. T. Jane McGrew, Chairperson**

**Division of Nursing  
Southwest Mississippi Community College  
Summit, MS 39666  
Telephone: (601) 276-2008; FAX: (601) 276-3888  
E-Mail: [mcgrew@smcc.edu](mailto:mcgrew@smcc.edu)  
Web Address: [www.smcc.edu](http://www.smcc.edu)**

**Type of Program:** Associate Degree Nursing Program

**Length of Time:** 2 years (4 academic semesters-  
excluding prerequisites)

**Credits Required for Graduation:** 72 semester credit hours

**Degree Awarded:** Associate of Science

**Cost:**

Tuition	\$675.00/semester
Room and Board	\$950.00/semester
Uniforms and Accessories	\$300.00/semester
School Pin/Picture	\$35.00-175.00
Books	\$700.00 (approx.)
Malpractice Insurance	\$15.00/year
Travel	\$40/month (approx. 2-50 miles one way)
	<b>MUST PROVIDE OWN TRANSPORTATION</b>
Lab Fees	\$25.00/semester
Assessment Testing Fees	\$350.00 (approx.)
LPN Advanced Placement	\$50.00
Licensure Examination	\$260.00 (In-State)
CPR	\$40.00
Health Requirements	\$100.00-200.00
Clinical Experiences	\$265.00
Criminal Background Check	\$75.00

This information is current as of August 2006 but is subject to change.

# PRACTICAL NURSING PROGRAMS

## COPIAH LINCOLN COMMUNITY COLLEGE (MAGEE CAMPUS)

525 Main Avenue  
Magee, MS 39111  
Telephone: (601) 849-5149;  
E-Mail: [lisa.sullivan@colin.edu](mailto:lisa.sullivan@colin.edu)  
Web Page: [www.colin.cc.ms.us](http://www.colin.cc.ms.us)

<b>Length of Time:</b>	1 year
<b>Credits Required for Graduation:</b>	50 semester credit hours
<b>Degree Awarded:</b>	Licensed Practical Nursing (LPN)
<b>Cost:</b>	
Tuition	700.00/semester
Room and Board	N/A (located 60 miles from dorms)
Uniform/Accessories	351.00
School Pin/Picture	30.00
Books	470.00
Liability Insurance	15.00/year
Travel	85.00 per semester
Lab Fee	50.00
Test Fee	55.00-305.00
Licensure Examination	250.00
CPR	40.00
Health Requirements	100.00-200.00
Criminal Background Check	50.00

This information is current as of August 2006 but is subject to change.

# COPIAH LINCOLN COMMUNITY COLLEGE (NATCHEZ CAMPUS)

**30 Campus Drive**  
**Natchez, MS 39120**  
**Telephone: (662) 442-9111**  
**E-Mail: [brandy.huff@colin.edu](mailto:brandy.huff@colin.edu)**  
**Web Page: [www.colin.cc.ms.us](http://www.colin.cc.ms.us)**

<b>Length of Time:</b>	1 year
<b>Credits Required for Graduation:</b>	50 semester credit hours
<b>Degree Awarded:</b>	Licensed Practical Nursing (LPN)
<b>Cost:</b>	
Tuition	700.00/semester
Room and Board	(Dorms shared with Alcorn Nursing)
Uniform/Accessories	351.00
School Pin/Picture	30.00
Books	470.00
Liability Insurance	15.00/year
Travel	85.00 per semester
Lab Fee	50.00
Test Fee	55.00-305.00
Licensure Examination	250.00
CPR	40.00
Health Requirements	100.00-200.00
Criminal Background Check	50.00

This information is current as of August 2006 but is subject to change.



# COPIAH LINCOLN COMMUNITY COLLEGE (WESSON CAMPUS)

**PO Box 649**

**Wesson, MS 39191**

**Telephone: (601) 643-5101**

**E-Mail: [laura.douglas@colin.edu](mailto:laura.douglas@colin.edu)**

**Web Page: [www.colin.cc.ms.us](http://www.colin.cc.ms.us)**

<b>Length of Time:</b>	1 year
<b>Credits Required for Graduation:</b>	50 semester credit hours
<b>Degree Awarded:</b>	Licensed Practical Nursing (LPN)
<b>Cost:</b>	
Tuition	700.00/semester
Room and Board	N/A
Uniform/Accessories	351.00
School Pin/Picture	30.00
Books	470.00
Liability Insurance	15.00/year
Travel	85.00 per semester
Lab Fee	50.00
Test Fee	55.00-305.00
Licensure Examination	250.00
CPR	40.00
Health Requirements	100.00-200.00
Criminal Background Check	50.00

This information is current as of August 2006 but is subject to change.

# EAST CENTRAL COMMUNITY COLLEGE

**275 W. Broad Street**  
**Decatur, MS 39327**  
**Telephone: (601) 635-2111**  
**E-Mail: [lluke@eccc.edu](mailto:lluke@eccc.edu)**  
**Web Page: [www.eccc.edu](http://www.eccc.edu)**

**Length of Time:** 1 year  
**Credits Required for Graduation:** 50 semester credit hours  
**Degree Awarded:** Licensed Practical Nursing (LPN)

**Cost:**

Tuition	700.00/semester
Room and Board	1185.00
Uniform/Accessories	350.00
School Pin/Picture	53.00
Books	500.00
Liability Insurance	15.00/year
Travel	85.00 per semester
Lab Fee	60.00
Test Fee	15.00 per semester
Licensure Examination	260.00
CPR	25.00
Health Requirements	100.00-200.00
Criminal Background Check	50.00
Technology Fee	25.00

This information is current as of August 2006 but is subject to change.

# HINDS COMMUNITY COLLEGE (JACKSON CAMPUS)

**1750 Chadwick Drive**  
**Jackson, MS 39204**  
**Telephone: (601) 371-3516**  
**E-Mail: [AMKRON@hindsc.edu](mailto:AMKRON@hindsc.edu)**  
**Web Page: [www.hindsc.edu](http://www.hindsc.edu)**

<b>Length of Time:</b>	1 year / 35 hours per week
<b>Credits Required for Graduation:</b>	50 semester credit hours
<b>Degree Awarded:</b>	Licensed Practical Nursing (LPN)
<b>Cost:</b>	
Tuition	830.00/semester full time 85.00 semester part time
Registration Fee	40.00 each semester
Room and Board	1,000.00 - 1,500.00 per semester
Uniform/Accessories	275.00
School Pin/Picture	30.00 pin 15.00 picture
Graduation Fee	45.00
Graduation Uniform	50.00
Books	550.00 - 600.00
Liability Insurance	15.00/year
Travel	N/A
Lab Fee	30.00 per semester
Test Fee	60.00 per semester
Licensure Examination	260.00
CPR	35.00 + 12.00 for book
Health Requirements	300.00-350.00
Criminal Background Check	50.00

This information is current as of August 2006 but is subject to change.

# HINDS COMMUNITY COLLEGE (VICKSBURG CAMPUS)

755 Hwy 27 South  
Vicksburg, MS 39180  
Telephone: (601) 638-0600  
Web Page: [www.hindscc.edu](http://www.hindscc.edu)

**Length of Time:** 1 year / 35 hours per week  
**Credits Required for Graduation:** 50 semester credit hours  
**Degree Awarded:** Licensed Practical Nursing (LPN)

**Cost:**

Tuition	830.00/semester full time 85.00 semester part time
Registration Fee	40.00 each semester
Room and Board	
Uniform/Accessories	275.00
School Pin/Picture	30.00 pin 15.00 picture
Graduation Fee	45.00
Graduation Uniform	50.00
Books	550.00 - 600.00
Liability Insurance	15.00/year
Travel	
Lab Fee	30.00 per semester
Test Fee	60.00 per semester
Licensure Examination	260.00
CPR	35.00 + 12.00 for book
Health Requirements	300.00-350.00
Criminal Background Check	50.00

This information is current as of August 2006 but is subject to change.

# JONES COUNTY JUNIOR COLLEGE

900 S Court Street

Ellisville, MS 39437

Telephone: (601) 477-4000

E-Mail: [sandra.waldrup@jcc.ms.us](mailto:sandra.waldrup@jcc.ms.us)

Web Page: [www.jcc.ms.us](http://www.jcc.ms.us)

**Length of Time:** 1 year

**Credits Required for Graduation:** 50 semester credit hours

**Degree Awarded:** Licensed Practical Nursing (LPN)

**Cost:**

Tuition	1,094.00
Room and Board	444.00 each 5 week session
Uniform/Accessories	310.00
School Pin/Picture	50.00
Books	360.00
Liability Insurance	Paid with lab fees
Travel	N/A
Lab Fee	174.00
Test Fee	Paid with lab fees
Licensure Examination	260.00
CPR	30.00
Health Requirements	100.00
Criminal Background Check	65.00

This information is current as of August 2006 but is subject to change.

# MISSISSIPPI GULF COAST COMMUNITY COLLEGE (GEORGE COUNTY CENTER)

**PO Box 77**

**Lucedale, MS 39452**

**Telephone: (601) 974-4201 or 866-735-1122**

**E-Mail: [rhonda.maddox@mgccc.edu](mailto:rhonda.maddox@mgccc.edu)**

**Web Page: [www.mgccc.edu](http://www.mgccc.edu)**

<b>Length of Time:</b>	1 year
<b>Credits Required for Graduation:</b>	50 semester credit hours
<b>Degree Awarded:</b>	Licensed Practical Nursing (LPN)
<b>Cost:</b>	
Tuition	745.00
Room and Board	N/A
Uniform/Accessories	250.00
School Pin/Picture	Free
Books	356.00
Liability Insurance	11.00 per semester
Travel	N/A
Lab Fee	N/A
Test Fee	124.00
Licensure Examination	260.00
CPR	35.00
Health Requirements	75.00
Criminal Background Check	50.00

This information is current as of August 2006 but is subject to change.

# MISSISSIPPI GULF COAST COMMUNITY COLLEGE (JACKSON COUNTY)

**PO Box 100**

**Gautier, MS 39553**

**Telephone: (228) 497-9602 or 866-735-1122**

**E-Mail: [sheila.lyon@mgccc.edu](mailto:sheila.lyon@mgccc.edu)**

**Web Page: [www.mgccc.edu](http://www.mgccc.edu)**

<b>Length of Time:</b>	1 year
<b>Credits Required for Graduation:</b>	50 semester credit hours
<b>Degree Awarded:</b>	Licensed Practical Nursing (LPN)
<b>Cost:</b>	
Tuition	745.00
Room and Board	N/A
Uniform/Accessories	250.00
School Pin/Picture	Free
Books	356.00
Liability Insurance	11.00 per semester
Travel	N/A
Lab Fee	N/A
Test Fee	124.00
Licensure Examination	260.00
CPR	35.00
Health Requirements	75.00
Criminal Background Check	50.00

This information is current as of August 2006 but is subject to change.

# MISSISSIPPI GULF COAST COMMUNITY COLLEGE (JEFFERSON DAVIS)

2226 Switzer Road  
Gulfport, MS 39057  
Telephone: (601) 554-5525  
E-Mail: [sbedwell@prcc.edu](mailto:sbedwell@prcc.edu)  
Web Page: [www.prcc.edu](http://www.prcc.edu)

<b>Length of Time:</b>	1 year
<b>Credits Required for Graduation:</b>	50 semester credit hours
<b>Degree Awarded:</b>	Licensed Practical Nursing (LPN)
<b>Cost:</b>	
Tuition	760.00
Room and Board	N/A
Uniform/Accessories	250.00
School Pin/Picture	55.00
Books	800.00 year
Liability Insurance	15.00
Travel	100.00 - Whitfield Rotation
Lab Fee	34.00
Test Fee	250.00
Licensure Examination	260.00
CPR	35.00
Health Requirements	200.00
Criminal Background Check	75.00
Clinical Kit	35.00

This information is current as of August 2006 but is subject to change.



# PEARL RIVER COMMUNITY COLLEGE (HATTIESBURG CAMPUS)

5448 U.S. Hwy 49 South  
Hattiesburg, MS 39401  
Telephone: (601) 554-5525  
E-Mail: [sabedwell@prcc.edu](mailto:sabedwell@prcc.edu)  
Web Page: [www.prcc.edu](http://www.prcc.edu)

<b>Length of Time:</b>	1 year
<b>Credits Required for Graduation:</b>	50 semester credit hours
<b>Degree Awarded:</b>	Licensed Practical Nursing (LPN)
<b>Cost:</b>	
Tuition	760.00
Room and Board	N/A
Uniform/Accessories	250.00
School Pin/Picture	55.00
Books	800.00
Liability Insurance	15.00
Travel	100.00 Whitfield Rotation
Lab Fee	34.00
Test Fee	250.00
Licensure Examination	260.00
CPR	35.00
Health Requirements	200.00
Criminal Background Check	75.00
Clinical Kit	35.00

This information is current as of August 2006 but is subject to change.

# PEARL RIVER COMMUNITY COLLEGE (POPLARVILLE CAMPUS)

Station A Box 5010  
Poplarville, MS 39470  
Telephone: (601) 403-1000  
E-Mail: [sabedwell@prcc.edu](mailto:sabedwell@prcc.edu)  
Web Page: [www.prcc.edu](http://www.prcc.edu)

**Length of Time:** 1 year  
**Credits Required for Graduation:** 50 semester credit hours  
**Degree Awarded:** Licensed Practical Nursing (LPN)

**Cost:**

Tuition	760.00
Room and Board	1032.00
Uniform/Accessories	250.00
School Pin/Picture	55.00
Books	800.00
Liability Insurance	15.00
Travel	100.00
Lab Fee	34.00
Test Fee	250.00
Licensure Examination	260.00
CPR	35.00
Health Requirements	200.00
Criminal Background Check	75.00
Clinical Kit	35.00

This information is current as of August 2006 but is subject to change.

# SOUTHWEST MISSISSIPPI COMMUNITY COLLEGE

## Career and Technical Education Division

1109 Union Drive

Summit, MS 39666

Telephone: (601) 276-2437

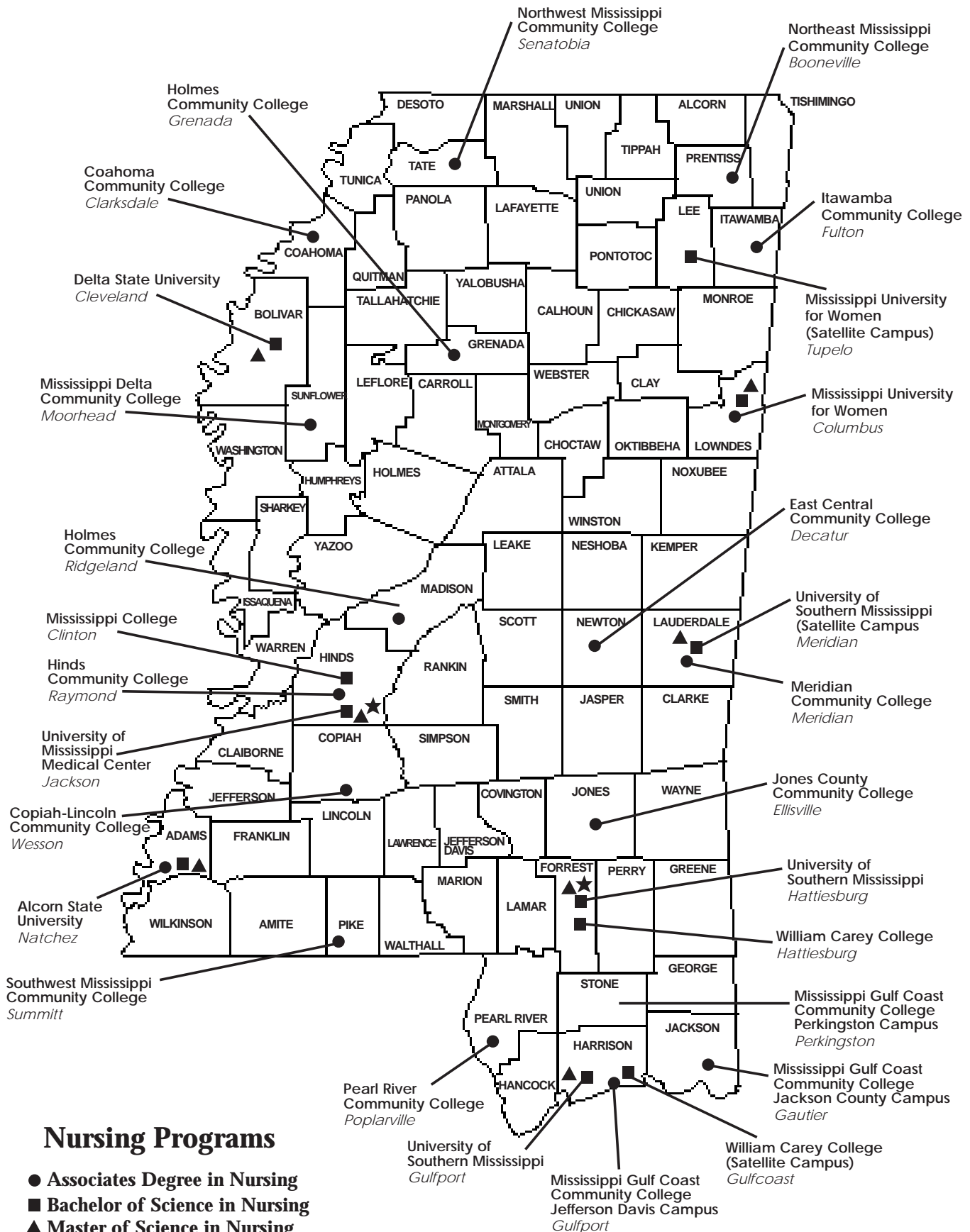
E-Mail: [sherri@smcc.edu](mailto:sherri@smcc.edu)

Web page: [www.smcc.edu](http://www.smcc.edu)

<b>Length of Time:</b>	11 months
<b>Credits Required for Graduation:</b>	50 semester credit hours
<b>Degree Awarded:</b>	Licensed Practical Nursing (LPN)
<b>Cost:</b>	
Tuition	900.00 per semester
Lab Fee	75.00 per semester
Uniform/Accessories	485.00
Books	800.00
Travel	100.00 Whitfield Rotation
Test Fee	300.00 (ATI)
Board Exams	300.00
CPR	35.00
Health Requirements	200.00

This information is current as of August 2006 but is subject to change.

# LOCATIONS OF PROGRAMS OF NURSING IN MISSISSIPPI



## NOTES

PhD MSN BSN ADN PN



[www.mshealthcareers.com](http://www.mshealthcareers.com)

[www.monw.org](http://www.monw.org)

<http://msahec.umc.edu>

116 Woodgreen Crossing • Madison, MS 39110

601.982.3251 • 800.289.8884 • Fax: 601.368.3200 • [www.mhanet.org](http://www.mhanet.org)